



LABORATORY GROWN DIAMOND REPORT

November 15, 2025

IGI Report Number

Description

LABORATORY GROWN DIAMOND

Shape and Cutting Style

HEART MODIFIED BRILLIANT

Measurements

3.81 X 4.31 X 2.40 MM

GRADING RESULTS

Carat Weight

0.29 CARAT

Color Grade

VERY LIGHT PINKISH BROWN

Clarity Grade

VS 2

ADDITIONAL GRADING INFORMATION

Polish

VERY GOOD

Symmetry

GOOD

Fluorescence

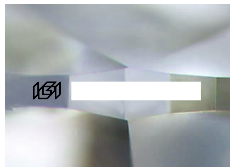
SLIGHT

Inscription(s)

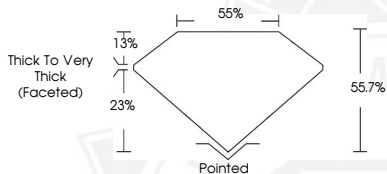


Comments: This Laboratory Grown Diamond was created by Chemical Vapor Deposition (CVD) growth process.

Indications of post-growth treatment.



Sample Image Used



November 15, 2025

IGI Report Number

HEART MODIFIED BRILLIANT

LABORATORY GROWN DIAMOND

3.81 X 4.31 X 2.40 MM

Carat Weight

0.29 CARAT

Color Grade

VERY LIGHT PINKISH

BROWN

Clarity Grade

VS 2

Polish

VERY GOOD

Symmetry

GOOD

Fluorescence

SLIGHT

Inscription(s)



Comments: This Laboratory Grown Diamond was created by Chemical Vapor Deposition (CVD) growth process. Indications of post-growth treatment.

November 15, 2025

IGI Report Number

HEART MODIFIED BRILLIANT

LABORATORY GROWN DIAMOND

3.81 X 4.31 X 2.40 MM

Carat Weight

0.29 CARAT

Color Grade

VERY LIGHT PINKISH

BROWN

Clarity Grade

VS 2

Polish

VERY GOOD

Symmetry

GOOD

Fluorescence

SLIGHT

Inscription(s)



Comments: This Laboratory Grown Diamond was created by Chemical Vapor Deposition (CVD) growth process. Indications of post-growth treatment.



THIS DOCUMENT WAS PRODUCED WITH THE FOLLOWING SECURITY MEASURES: SPECIAL DOCUMENT PAPER, INK SCREENS, WATERMARK, BACKGROUND DESIGNS, HOLOGRAM AND OTHER SECURITY FEATURES NOT LISTED AND DO EXCEED DOCUMENT SECURITY INDUSTRY GUIDELINES.