



LABORATORY GROWN DIAMOND REPORT

August 12, 2025
 IGI Report Number
 Description **LABORATORY GROWN DIAMOND**
 Shape and Cutting Style **ROUND BRILLIANT**
 Measurements **6.23 - 6.25 X 3.90 MM**

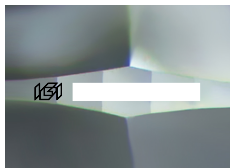
GRADING RESULTS

Carat Weight **0.94 CARAT**
 Color Grade **D**
 Clarity Grade **VVS 2**
 Cut Grade **IDEAL**

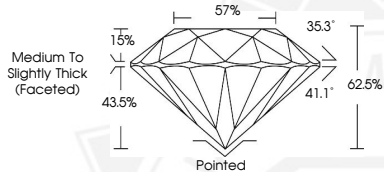
ADDITIONAL GRADING INFORMATION

Polish **EXCELLENT**
 Symmetry **EXCELLENT**
 Fluorescence **NONE**
 Inscription(s)

Comments: As Grown - No indication of post-growth treatment.
 This Laboratory Grown Diamond was created by High Pressure High
 Temperature (HPHT) growth process.
 Type II



Sample Image Used



August 12, 2025
 IGI Report Number
 ROUND BRILLIANT
 LABORATORY GROWN DIAMOND
 6.23 - 6.25 X 3.90 MM
 0.94 CARAT
 D
 VVS 2
 IDEAL
 EXCELLENT
 EXCELLENT
 NONE

Comments: As Grown - No indication of post-growth treatment. This Laboratory Grown Diamond was created by High Pressure High Temperature (HPHT) growth process. Type II

August 12, 2025
 IGI Report Number
 ROUND BRILLIANT
 LABORATORY GROWN DIAMOND
 6.23 - 6.25 X 3.90 MM
 0.94 CARAT
 D
 VVS 2
 IDEAL
 EXCELLENT
 EXCELLENT
 NONE

Comments: As Grown - No indication of post-growth treatment. This Laboratory Grown Diamond was created by High Pressure High Temperature (HPHT) growth process. Type II



THIS DOCUMENT WAS PRODUCED WITH THE FOLLOWING SECURITY MEASURES: SPECIAL DOCUMENT PAPER, INK SCREENS, WATERMARK, BACKGROUND DESIGNS, HOLOGRAM AND OTHER SECURITY FEATURES NOT LISTED AND DO EXCEED DOCUMENT SECURITY INDUSTRY GUIDELINES.