



LABORATORY GROWN DIAMOND REPORT

December 19, 2025

IGI Report Number

Description

LABORATORY GROWN DIAMOND

Shape and Cutting Style

OVAL BRILLIANT

Measurements

5.43 X 3.94 X 2.36 MM

GRADING RESULTS

Carat Weight

0.31 CARAT

Color Grade

D

Clarity Grade

VS 2

ADDITIONAL GRADING INFORMATION

Polish

VERY GOOD

Symmetry

GOOD

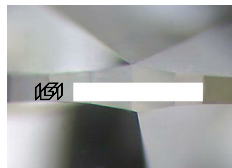
Fluorescence

NONE

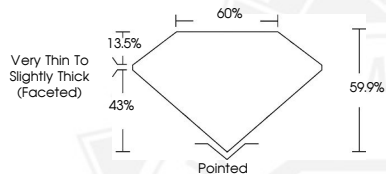
Inscription(s)



Comments: This Laboratory Grown Diamond was created by Chemical Vapor Deposition (CVD) growth process. Type IIa



Sample Image Used



December 19, 2025

IGI Report Number

OVAL BRILLIANT

LABORATORY GROWN DIAMOND

5.43 X 3.94 X 2.36 MM

Carat Weight

0.31 CARAT

Color Grade

D

Clarity Grade

VS 2

Polish

VERY GOOD

Symmetry

GOOD

Fluorescence

NONE

Inscription(s)



Comments: This Laboratory Grown Diamond was created by Chemical Vapor Deposition (CVD) growth process. Type IIa

December 19, 2025

IGI Report Number

OVAL BRILLIANT

LABORATORY GROWN DIAMOND

5.43 X 3.94 X 2.36 MM

Carat Weight

0.31 CARAT

Color Grade

D

Clarity Grade

VS 2

Polish

VERY GOOD

Symmetry

GOOD

Fluorescence

NONE

Inscription(s)



Comments: This Laboratory Grown Diamond was created by Chemical Vapor Deposition (CVD) growth process. Type IIa



THIS DOCUMENT WAS PRODUCED WITH THE FOLLOWING SECURITY MEASURES: SPECIAL DOCUMENT PAPER, INK SCREENS, WATERMARK, BACKGROUND DESIGNS, HOLOGRAM AND OTHER SECURITY FEATURES NOT LISTED AND DO EXCEED DOCUMENT SECURITY INDUSTRY GUIDELINES.