



LABORATORY GROWN DIAMOND REPORT

January 22, 2026

IGI Report Number

Description

LABORATORY GROWN DIAMOND

Shape and Cutting Style

PEAR BRILLIANT

Measurements

8.53 X 5.62 X 3.43 MM

GRADING RESULTS

Carat Weight

0.94 CARAT

Color Grade

E

Clarity Grade

VVS 2

ADDITIONAL GRADING INFORMATION

Polish

EXCELLENT

Symmetry

EXCELLENT

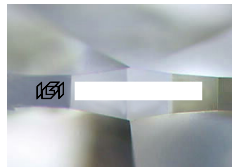
Fluorescence

NONE

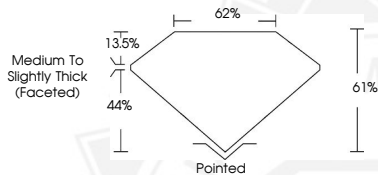
Inscription(s)



Comments: This Laboratory Grown Diamond was created by Chemical Vapor Deposition (CVD) growth process. Type IIa



Sample Image Used



January 22, 2026

IGI Report Number

PEAR BRILLIANT

LABORATORY GROWN DIAMOND

8.53 X 5.62 X 3.43 MM

Carat Weight

0.94 CARAT

Color Grade

E

Clarity Grade

VVS 2

Polish

EXCELLENT

Symmetry

EXCELLENT

Fluorescence

NONE

Inscription(s)



Comments: This Laboratory Grown Diamond was created by Chemical Vapor Deposition (CVD) growth process. Type IIa

January 22, 2026

IGI Report Number

PEAR BRILLIANT

LABORATORY GROWN DIAMOND

8.53 X 5.62 X 3.43 MM

Carat Weight

0.94 CARAT

Color Grade

E

Clarity Grade

VVS 2

Polish

EXCELLENT

Symmetry

EXCELLENT

Fluorescence

NONE

Inscription(s)



Comments: This Laboratory Grown Diamond was created by Chemical Vapor Deposition (CVD) growth process. Type IIa



THIS DOCUMENT WAS PRODUCED WITH THE FOLLOWING SECURITY MEASURES: SPECIAL DOCUMENT PAPER, INK SCREENS, WATERMARK, BACKGROUND DESIGNS, HOLOGRAM AND OTHER SECURITY FEATURES NOT LISTED AND DO EXCEED DOCUMENT SECURITY INDUSTRY GUIDELINES.