



ELECTRONIC COPY

Report verification at igi.org

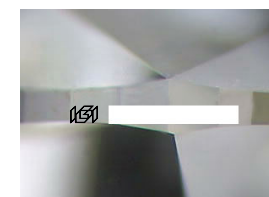
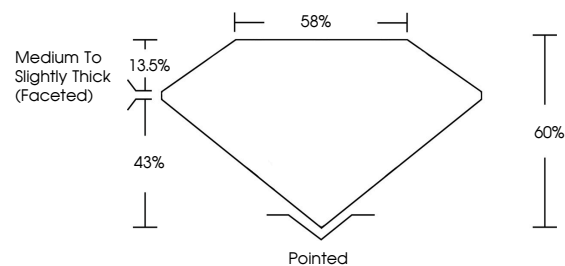
LABORATORY GROWN DIAMOND REPORT

May 27, 2026
 IGI Report Number
 Description **LABORATORY GROWN DIAMOND**
 Shape and Cutting Style **OVAL BRILLIANT**
 Measurements **9.56 X 6.45 X 3.87 MM**
GRADING RESULTS
 Carat Weight **1.50 CARAT**
 Color Grade **G**
 Clarity Grade **VS 1**

ADDITIONAL GRADING INFORMATION

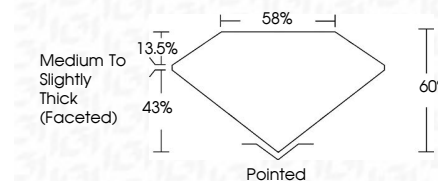
Polish **EXCELLENT**
 Symmetry **EXCELLENT**
 Fluorescence **NONE**
 Inscription(s) 
 Comments: This Laboratory Grown Diamond was created by Chemical Vapor Deposition (CVD) growth process.
 Type IIa

PROPORTIONS



Sample Image Used

May 27, 2026
 IGI Report Number
 Description **LABORATORY GROWN DIAMOND**
 Shape and Cutting Style **OVAL BRILLIANT**
 Measurements **9.56 X 6.45 X 3.87 MM**
GRADING RESULTS
 Carat Weight **1.50 CARAT**
 Color Grade **G**
 Clarity Grade **VS 1**



COLOR

D E F G H I J Faint Very Light Light

CLARITY

FL	IF	VS ¹⁻²	VS ¹⁻²	SI ¹⁻²	I ¹⁻³
Flawless	Internally Flawless	Very Very Slightly Included	Very Slightly Included	Slightly Included	Included

ADDITIONAL GRADING INFORMATION

Polish **EXCELLENT**
 Symmetry **EXCELLENT**
 Fluorescence **NONE**
 Inscription(s) 
 Comments: This Laboratory Grown Diamond was created by Chemical Vapor Deposition (CVD) growth process.
 Type IIa



May 27, 2026
 IGI Report No
OVAL BRILLIANT
 9.56 X 6.45 X 3.87 MM
 Carat Weight
 Color Grade
 Clarity Grade
 Table
 Depth
 Girdle
 Medium to Slightly Thick (Faceted)
 Culet
 Polish
 Symmetry
 Fluorescence
 Inscription(s)
 1.50 CARAT
 G
 VS 1
 60%
 85%
 Pointed
 EXCELLENT
 EXCELLENT
 NONE
 IGI
 Comments: This Laboratory Grown Diamond was created by Chemical Vapor Deposition (CVD) growth process.
 Type IIa