



DIAMOND REPORT ELECTRONIC COPY

June 16, 2023
IGI Report Number
Description NATURAL DIAMOND
Shape and Cutting Style ROUND BRILLIANT
Measurements 6.37 - 6.41 x 4.00 mm

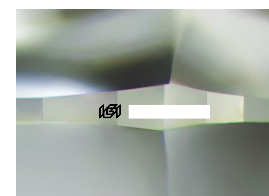
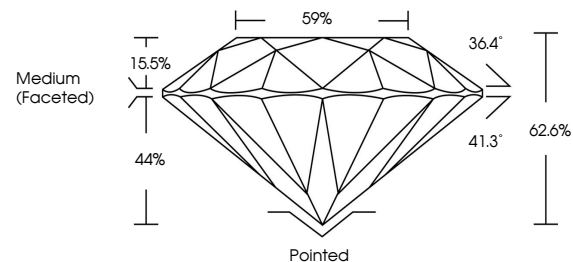
GRADING RESULTS

Carat Weight 1.01 CARAT
Color Grade K
Clarity Grade VS 2
Cut Grade EXCELLENT

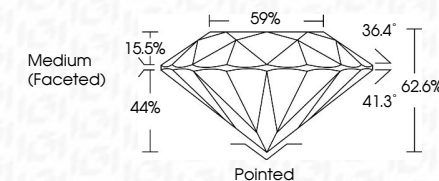
ADDITIONAL GRADING INFORMATION

Polish EXCELLENT
Symmetry EXCELLENT
Fluorescence NONE
Inscription(s)

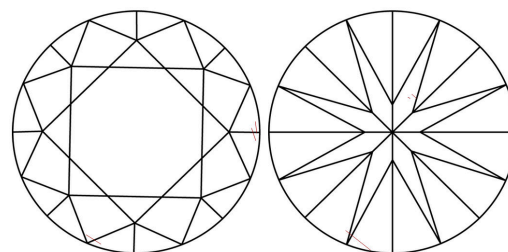
PROPORTIONS



Sample Image Used



CLARITY CHARACTERISTICS



KEY TO SYMBOLS

Red symbols indicate internal characteristics.
Green symbols indicate external characteristics.

COLOR

Table with 6 columns: D-F, G-J, K-M, N-R, S-Z, FANCY. Row 1: Colorless, Near Colorless, Slightly Tinted, Very Light Color, Light Color.

CLARITY

Table with 5 columns: IF, VS 1-2, VS 1-2, SI 1-2, I 1-3. Row 1: Internally Flawless, Very Very Slightly Included, Very Slightly Included, Slightly Included, Included.

June 16, 2023
IGI Report Number
Description NATURAL DIAMOND
Shape and Cutting Style ROUND BRILLIANT
Measurements 6.37 - 6.41 x 4.00 mm

GRADING RESULTS

Carat Weight 1.01 CARAT
Color Grade K
Clarity Grade VS 2
Cut Grade EXCELLENT

ADDITIONAL GRADING INFORMATION

Polish EXCELLENT
Symmetry EXCELLENT
Fluorescence NONE
Inscription(s)



IGI

June 16, 2023
IGI Report No. NATURAL DIAMOND ROUND BRILLIANT
6.37 - 6.41 x 4.00 mm
Carat Weight 1.01 CARAT
Color Grade K
Clarity Grade VS 2
Cut Grade EXCELLENT
Depth 62.6%
Table 59%
Girdle Grade Medium (Faceted)
Culet Pointed
Polish EXCELLENT
Symmetry EXCELLENT
Fluorescence NONE
Inscription(s)