



**ELECTRONIC COPY**

Report verification at [igi.org](http://igi.org)

**DIAMOND REPORT**

February 16, 2026  
 IGI Report Number  
 Description **NATURAL DIAMOND**  
 Shape and Cutting Style **OVAL BRILLIANT**  
 Measurements **8.09 X 5.64 X 3.58 MM**

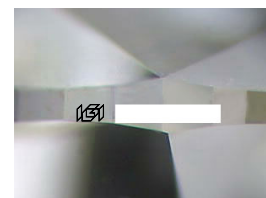
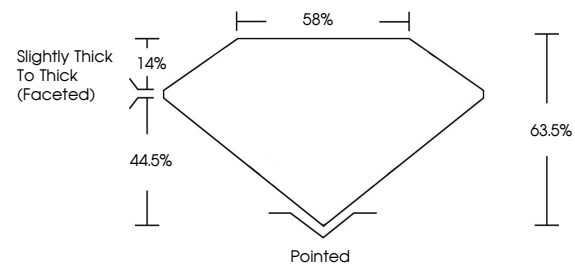
**GRADING RESULTS**

Carat Weight **1.00 CARAT**  
 Color Grade **J**  
 Clarity Grade **VS 2**  
 Cut Grade **VERY GOOD**

**ADDITIONAL GRADING INFORMATION**

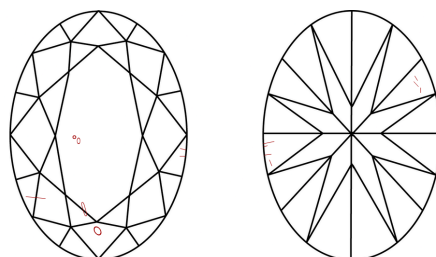
Polish **EXCELLENT**  
 Symmetry **VERY GOOD**  
 Fluorescence **NONE**  
 Inscription(s)

**PROPORTIONS**



Sample Image Used

**CLARITY CHARACTERISTICS**



**KEY TO SYMBOLS**

Red symbols indicate internal characteristics.  
 Green symbols indicate external characteristics.

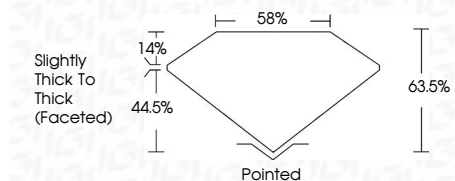
**COLOR**

D - F	G - J	K - M	N - R	S - Z	FANCY
Colorless	Near Colorless	Slightly Tinted	Very Light Color	Light Color	

**CLARITY**

FL	IF	VVS <sup>1-2</sup>	VS <sup>1-2</sup>	SI <sup>1-2</sup>	I <sup>1-3</sup>
Flawless	Internally Flawless	Very Very Slightly Included	Very Slightly Included	Slightly Included	Included

February 16, 2026  
 IGI Report Number  
 Description **NATURAL DIAMOND**  
 Shape and Cutting Style **OVAL BRILLIANT**  
 Measurements **8.09 X 5.64 X 3.58 MM**  
**GRADING RESULTS**  
 Carat Weight **1.00 CARAT**  
 Color Grade **J**  
 Clarity Grade **VS 2**  
 Cut Grade **VERY GOOD**



**ADDITIONAL GRADING INFORMATION**

Polish **EXCELLENT**  
 Symmetry **VERY GOOD**  
 Fluorescence **NONE**  
 Inscription(s)



**IGI**



February 16, 2026  
 IGI Report No  
**OVAL BRILLIANT**  
 8.09 X 5.64 X 3.58 MM  
 Carat Weight **1.00 CARAT**  
 Color Grade **J**  
 Clarity Grade **VS 2**  
 Depth **VERY GOOD**  
 Table **63.5%**  
 Girdle **88%**  
 Slightly Thick To Thick (Faceted)  
 Culet **Pointed**  
 Polish **EXCELLENT**  
 Symmetry **VERY GOOD**  
 Fluorescence **NONE**  
 Inscription(s)