



**INTERNATIONAL  
GEMOLOGICAL  
INSTITUTE**

**ELECTRONIC COPY**

**LABORATORY GROWN DIAMOND REPORT**

May 23, 2024  
 IGI Report Number  
 Description **LABORATORY GROWN DIAMOND**  
 Shape and Cutting Style **ROUND BRILLIANT**  
 Measurements **3.92 - 3.96 X 2.44 MM**

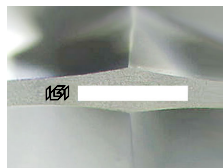
**GRADING RESULTS**

Carat Weight **0.23 CARAT**  
 Color Grade **D**  
 Clarity Grade **VS 2**  
 Cut Grade **VERY GOOD**

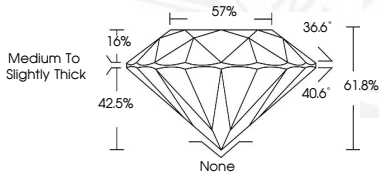
**ADDITIONAL GRADING INFORMATION**

Polish **EXCELLENT**  
 Symmetry **GOOD**  
 Fluorescence **NONE**  
 Inscription(s) 

Comments: As Grown - No indication of post-growth treatment.  
 This Laboratory Grown Diamond was created by High Pressure High  
 Temperature (HPHT) growth process.  
 Type II



Sample Image Used



May 23, 2024  
 IGI Report Number  
 ROUND BRILLIANT  
 LABORATORY GROWN DIAMOND  
 3.92 - 3.96 X 2.44 MM  
 Carat Weight **0.23 CARAT**  
 Color Grade **D**  
 Clarity Grade **VS 2**  
 Cut Grade **VERY GOOD**  
 Polish **EXCELLENT**  
 Symmetry **GOOD**  
 Fluorescence **NONE**  
 Inscription(s)   
 Comments: As Grown - No  
 indication of post-growth  
 treatment. This Laboratory Grown  
 Diamond was created by High  
 Pressure High Temperature (HPHT)  
 growth process. Type II

May 23, 2024  
 IGI Report Number  
 ROUND BRILLIANT  
 LABORATORY GROWN DIAMOND  
 3.92 - 3.96 X 2.44 MM  
 Carat Weight **0.23 CARAT**  
 Color Grade **D**  
 Clarity Grade **VS 2**  
 Cut Grade **VERY GOOD**  
 Polish **EXCELLENT**  
 Symmetry **GOOD**  
 Fluorescence **NONE**  
 Inscription(s)   
 Comments: As Grown - No  
 indication of post-growth  
 treatment. This Laboratory Grown  
 Diamond was created by High  
 Pressure High Temperature (HPHT)  
 growth process. Type II

 THIS DOCUMENT WAS PRODUCED WITH THE FOLLOWING SECURITY MEASURES: SPECIAL DOCUMENT PAPER, INK SCREENS, WATERMARK, BACKGROUND DESIGN, HOLOGRAM AND OTHER SECURITY FEATURES NOT LISTED AND DO EXCEED DOCUMENT SECURITY INDUSTRY GUIDELINES.

For terms & conditions and to verify this report, please visit [www.igi.org](http://www.igi.org)