



**ELECTRONIC COPY**

Report verification at [igi.org](http://igi.org)

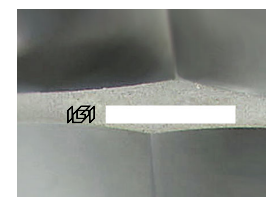
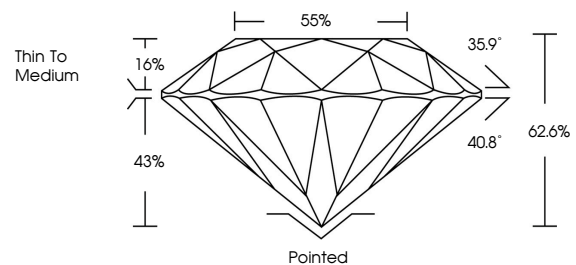
**LABORATORY GROWN DIAMOND REPORT**

October 10, 2025  
 IGI Report Number  
 Description **LABORATORY GROWN DIAMOND**  
 Shape and Cutting Style **ROUND BRILLIANT**  
 Measurements **6.44 - 6.45 X 4.04 MM**  
**GRADING RESULTS**  
 Carat Weight **1.03 CARAT**  
 Color Grade **FANCY INTENSE PINK**  
 Clarity Grade **VS 2**  
 Cut Grade **EXCELLENT**

**ADDITIONAL GRADING INFORMATION**

Polish **EXCELLENT**  
 Symmetry **EXCELLENT**  
 Fluorescence **STRONG**  
 Inscription(s)   
 Comments:  
 Secondary color: Orange

**PROPORTIONS**



Sample Image Used

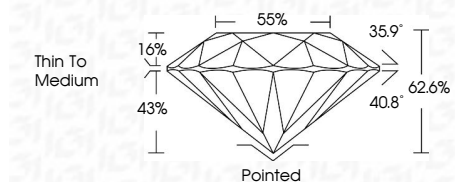
**COLOR**

D E F G H I J Faint Very Light Light

**CLARITY**

FL	IF	VVS <sup>1-2</sup>	VS <sup>1-2</sup>	SI <sup>1-2</sup>	I <sup>1-3</sup>
Flawless	Internally Flawless	Very Very Slightly Included	Very Slightly Included	Slightly Included	Included

October 10, 2025  
 IGI Report Number  
 Description **LABORATORY GROWN DIAMOND**  
 Shape and Cutting Style **ROUND BRILLIANT**  
 Measurements **6.44 - 6.45 X 4.04 MM**  
**GRADING RESULTS**  
 Carat Weight **1.03 CARAT**  
 Color Grade **FANCY INTENSE PINK**  
 Clarity Grade **VS 2**  
 Cut Grade **EXCELLENT**



**ADDITIONAL GRADING INFORMATION**

Polish **EXCELLENT**  
 Symmetry **EXCELLENT**  
 Fluorescence **STRONG**  
 Inscription(s)   
 Comments:  
 Secondary color: Orange



**IGI**

October 10, 2025	1.03 CARAT	Pointed
IGI Report No	FANCY INTENSE PINK	EXCELLENT
ROUND BRILLIANT	VS 2	EXCELLENT
6.44 - 6.45 X 4.04 MM	62.6%	EXCELLENT
Carat Weight	85%	STRONG
Color Grade	Thin To Medium	
Clarity Grade		
Cut Grade		
Depth		
Table		
Girdle		
Culet		
Polish		
Symmetry		
Fluorescence		
Inscription(s)		
Comments:		
Secondary color: Orange		