



ELECTRONIC COPY

Report verification at igi.org

DIAMOND REPORT

August 4, 2025
IGI Report Number
Description NATURAL DIAMOND
Shape and Cutting Style OVAL BRILLIANT
Measurements 8.51 X 5.99 X 3.86 MM

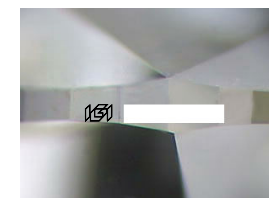
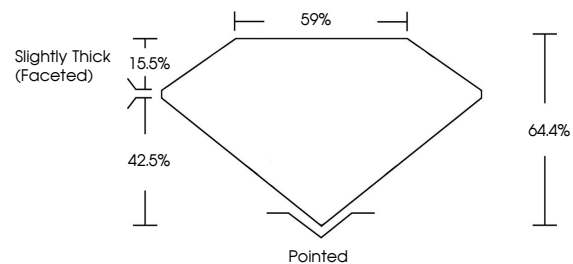
GRADING RESULTS

Carat Weight 1.30 CARAT
Color Grade I
Clarity Grade VVS 1
Cut Grade EXCELLENT

ADDITIONAL GRADING INFORMATION

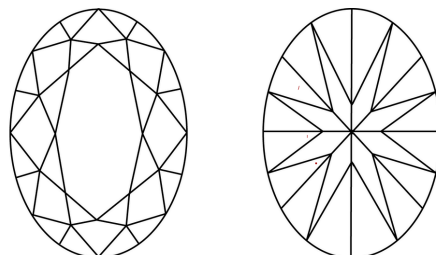
Polish EXCELLENT
Symmetry EXCELLENT
Fluorescence SLIGHT
Inscription(s)

PROPORTIONS



Sample Image Used

CLARITY CHARACTERISTICS



KEY TO SYMBOLS

Red symbols indicate internal characteristics.
Green symbols indicate external characteristics.

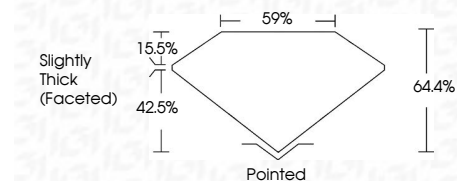
COLOR

Table with columns D-F, G-J, K-M, N-R, S-Z, FANCY and rows Colorless, Near Colorless, Slightly Tinted, Very Light Color, Light Color

CLARITY

Table with columns IF, VVS 1-2, VS 1-2, SI 1-2, I 1-3 and rows Internally Flawless, Very Very Slightly Included, Very Slightly Included, Slightly Included, Included

August 4, 2025
IGI Report Number
Description NATURAL DIAMOND
Shape and Cutting Style OVAL BRILLIANT
Measurements 8.51 X 5.99 X 3.86 MM
GRADING RESULTS
Carat Weight 1.30 CARAT
Color Grade I
Clarity Grade VVS 1
Cut Grade EXCELLENT



ADDITIONAL GRADING INFORMATION

Polish EXCELLENT
Symmetry EXCELLENT
Fluorescence SLIGHT
Inscription(s)



IGI



Summary of report details including date, report number, description, measurements, grading results, and additional information.