

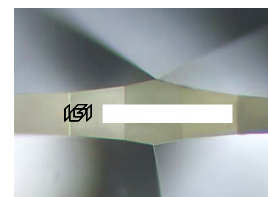
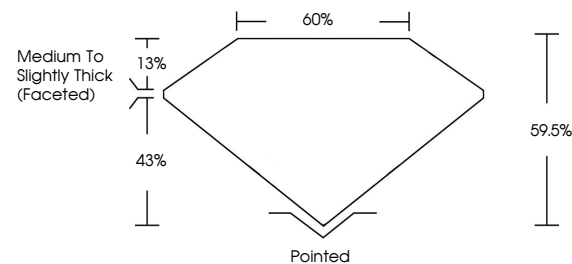


ELECTRONIC COPY

LABORATORY GROWN DIAMOND REPORT

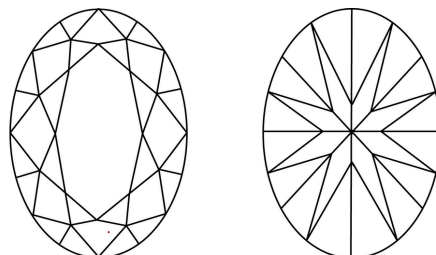
Report verification at igi.org

PROPORTIONS



Sample Image Used

CLARITY CHARACTERISTICS



KEY TO SYMBOLS

Red symbols indicate internal characteristics.
Green symbols indicate external characteristics.

COLOR

D E F G H I J Faint Very Light Light

CLARITY

FL	IF	VVS ¹⁻²	VS ¹⁻²	SI ¹⁻²	I ¹⁻³
Flawless	Internally Flawless	Very Very Slightly Included	Very Slightly Included	Slightly Included	Included

LABORATORY GROWN DIAMOND REPORT

January 5, 2026

IGI Report Number

Description **LABORATORY GROWN DIAMOND**Shape and Cutting Style **OVAL BRILLIANT**

Measurements 8.85 X 6.10 X 3.63 MM

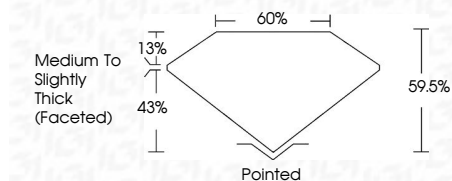
GRADING RESULTS

Carat Weight 1.21 CARAT

Color Grade

Clarity Grade WS 2

Cut Grade **EXCELLENT**



ADDITIONAL GRADING INFORMATION

Polish **EXCELLENT**

Symmetry **EXCELLENT**

Fluorescence NONEInscription(s)

Comments: As Grown - No indication of post-growth treatment.

This Laboratory Grown Diamond was created by High Pressure High Temperature (HPHT) growth process.

Type II



January 5, 2026	Carat Weight	1.21 CARAT
SI Report No.	Color Grade	D
SI Report No.	Clarity Grade	VVS 2
CYAL BRILLANT	Carat Grade	EXCELLENT
	Depth	59.5%
	Table	60%
	Girdle	Medium To Slightly Thick (Girdled)
	Culet	Pointed
	Polish	EXCELLENT
	Symmetry	EXCELLENT
	Fluorescence	NONE
	Inscription(s)	gsm
	Comments:	As Grown - No Indication of post-growth treatment.
		The Laboratory Grown Diamond was produced using the High Pressure High Temperature (HPHT) growth process.
		Type IIa

