



**INTERNATIONAL
GEMOLOGICAL
INSTITUTE**

LABORATORY GROWN DIAMOND REPORT

May 14, 2026

IGI Report Number

Description

Shape and Cutting Style

Measurements

LABORATORY GROWN DIAMOND

HEART MODIFIED BRILLIANT

3.78 X 4.08 X 2.69 MM

GRADING RESULTS

Carat Weight

0.34 CARAT

Color Grade

FANCY INTENSE PINK

Clarity Grade

VVS 2

ADDITIONAL GRADING INFORMATION

Polish

VERY GOOD

Symmetry

VERY GOOD

Fluorescence

SLIGHT

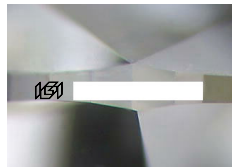
Inscription(s)



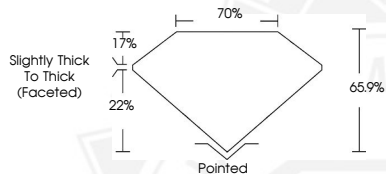
Comments: This Laboratory Grown Diamond was created by Chemical Vapor Deposition (CVD) growth process.

Indications of post-growth treatment.

ELECTRONIC COPY



Sample Image Used



May 14, 2026

IGI Report Number

HEART MODIFIED BRILLIANT

LABORATORY GROWN DIAMOND

3.78 X 4.08 X 2.69 MM

Carat Weight

0.34 CARAT

Color Grade

FANCY INTENSE

PINK

Clarity Grade

VVS 2

Polish

VERY GOOD

Symmetry

VERY GOOD

Fluorescence

SLIGHT

Inscription(s)



Comments: This Laboratory Grown Diamond was created by Chemical Vapor Deposition (CVD) growth process. Indications of post-growth treatment.

May 14, 2026

IGI Report Number

HEART MODIFIED BRILLIANT

LABORATORY GROWN DIAMOND

3.78 X 4.08 X 2.69 MM

Carat Weight

0.34 CARAT

Color Grade

FANCY INTENSE

PINK

Clarity Grade

VVS 2

Polish

VERY GOOD

Symmetry

VERY GOOD

Fluorescence

SLIGHT

Inscription(s)



Comments: This Laboratory Grown Diamond was created by Chemical Vapor Deposition (CVD) growth process. Indications of post-growth treatment.



THIS DOCUMENT WAS PRODUCED WITH THE FOLLOWING SECURITY MEASURES: SPECIAL DOCUMENT PAPER, INK SCREENS, WATERMARK, BACKGROUND DESIGNS, HOLOGRAM AND OTHER SECURITY FEATURES NOT LISTED AND DO EXCEED DOCUMENT SECURITY INDUSTRY GUIDELINES.

For terms & conditions and to verify this report, please visit www.igi.org