

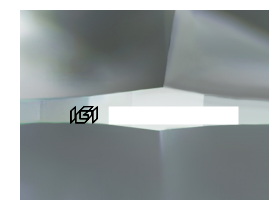
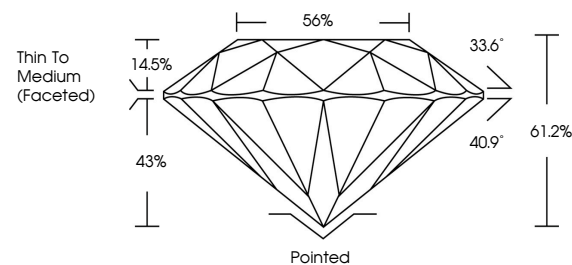


Report verification at igi.org

ELECTRONIC COPY

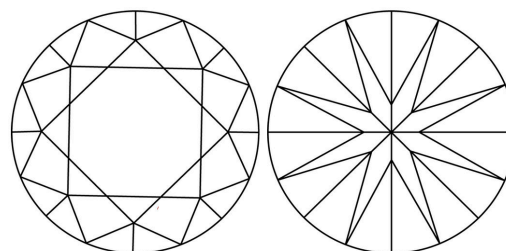
LABORATORY GROWN DIAMOND REPORT

PROPORTIONS



Sample Image Used

CLARITY CHARACTERISTICS



KEY TO SYMBOLS

Red symbols indicate internal characteristics. Green symbols indicate external characteristics.

COLOR

D E F G H I J Faint Very Light Light

CLARITY

FL IF VS 1-2 VS 1-2 SI 1-2 I 1-3
Flawless Internally Flawless Very Very Slightly Included Very Slightly Included Slightly Included Included

February 4, 2026

IGI Report Number

Description LABORATORY GROWN DIAMOND

Shape and Cutting Style ROUND BRILLIANT

Measurements 9.39 - 9.43 X 5.76 MM

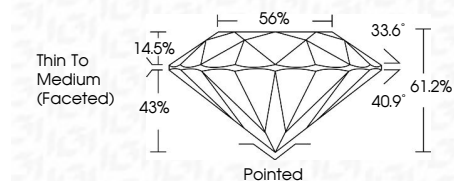
GRADING RESULTS

Carat Weight 3.10 CARATS

Color Grade FANCY INTENSE PINK

Clarity Grade VVS 2

Cut Grade IDEAL



ADDITIONAL GRADING INFORMATION

Polish EXCELLENT

Symmetry EXCELLENT

Fluorescence SLIGHT

Inscription(s) IGI

Comments: This Laboratory Grown Diamond was created by High Pressure High Temperature (HPHT) growth process. Indications of post-growth treatment.



Summary table of report details: February 4, 2026, IGI Report No. ROUND BRILLIANT, 9.39 - 9.43 X 5.76 MM, 3.10 CARATS, FANCY INTENSE PINK, VVS 2, IDEAL, 61.2%, 56%, Thin To Medium (Faceted), Pointed, EXCELLENT, EXCELLENT, SLIGHT, IGI, Comments: This Laboratory Grown Diamond was created by High Pressure High Temperature (HPHT) growth process. Indications of post-growth treatment.