



ELECTRONIC COPY

Report verification at igi.org

LABORATORY GROWN DIAMOND REPORT

February 8, 2025
IGI Report Number
Description LABORATORY GROWN DIAMOND
Shape and Cutting Style MARQUISE MODIFIED BRILLIANT
Measurements 16.20 X 7.17 X 4.51 MM

GRADING RESULTS

Carat Weight 3.55 CARATS
Color Grade FANCY VIVID PINK
Clarity Grade VS 2

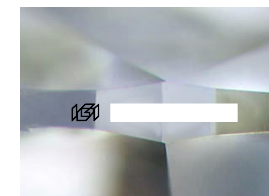
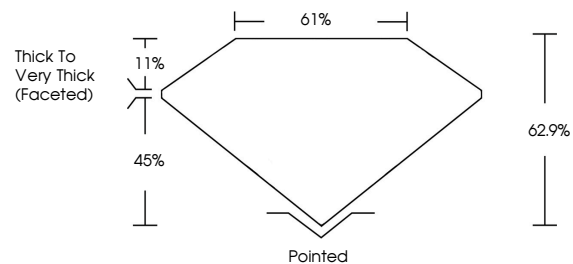
ADDITIONAL GRADING INFORMATION

Polish EXCELLENT
Symmetry EXCELLENT
Fluorescence SLIGHT

Inscription(s) IGI

Comments: This Laboratory Grown Diamond was created by Chemical Vapor Deposition (CVD) growth process. Indications of post-growth treatment.

PROPORTIONS



Sample Image Used

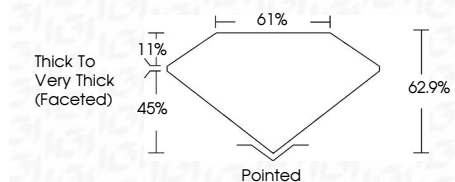
COLOR

D E F G H I J Faint Very Light Light

CLARITY

IF VS 1-2 VS 1-2 SI 1-2 I 1-3
Internally Flawless Very Very Slightly Included Very Slightly Included Slightly Included Included

February 8, 2025
IGI Report Number
Description LABORATORY GROWN DIAMOND
Shape and Cutting Style MARQUISE MODIFIED BRILLIANT
Measurements 16.20 X 7.17 X 4.51 MM
GRADING RESULTS
Carat Weight 3.55 CARATS
Color Grade FANCY VIVID PINK
Clarity Grade VS 2



ADDITIONAL GRADING INFORMATION

Polish EXCELLENT
Symmetry EXCELLENT
Fluorescence SLIGHT

Inscription(s) IGI
Comments: This Laboratory Grown Diamond was created by Chemical Vapor Deposition (CVD) growth process. Indications of post-growth treatment.



Summary table of report details: February 8, 2025, IGI Report No. MARQUISE MODIFIED BRILLIANT, 3.55 CARATS, FANCY VIVID PINK, VS 2, 16.20 X 7.17 X 4.51 MM, Thick to Very Thick (Faceted), Pointed, EXCELLENT, EXCELLENT, SLIGHT, IGI.

Comments: This Laboratory Grown Diamond was created by Chemical Vapor Deposition (CVD) growth process. Indications of post-growth treatment.