



Report verification at igi.org

ELECTRONIC COPY

LABORATORY GROWN DIAMOND REPORT

October 19, 2024
IGI Report Number
Description LABORATORY GROWN DIAMOND
Shape and Cutting Style OVAL MODIFIED BRILLIANT
Measurements 10.50 X 7.42 X 5.12 MM

GRADING RESULTS

Carat Weight 3.14 CARATS
Color Grade FANCY YELLOW
Clarity Grade VVS 2

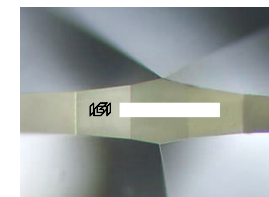
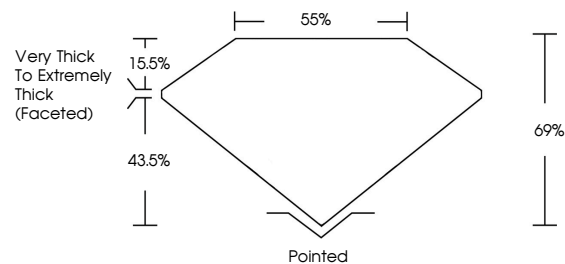
ADDITIONAL GRADING INFORMATION

Polish EXCELLENT
Symmetry EXCELLENT
Fluorescence NONE

Inscription(s) IGI

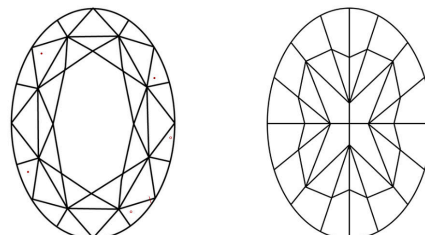
Comments: This Laboratory Grown Diamond was created by Chemical Vapor Deposition (CVD) growth process.

PROPORTIONS



Sample Image Used

CLARITY CHARACTERISTICS



KEY TO SYMBOLS

Red symbols indicate internal characteristics.
Green symbols indicate external characteristics.

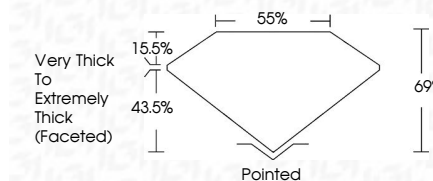
COLOR

D E F G H I J Faint Very Light Light

CLARITY

Table with columns for clarity grades: IF, VVS 1-2, VS 1-2, SI 1-2, I 1-3 and their corresponding descriptions: Internally Flawless, Very Very Slightly Included, Very Slightly Included, Slightly Included, Included.

October 19, 2024
IGI Report Number
Description LABORATORY GROWN DIAMOND
Shape and Cutting Style OVAL MODIFIED BRILLIANT
Measurements 10.50 X 7.42 X 5.12 MM
GRADING RESULTS
Carat Weight 3.14 CARATS
Color Grade FANCY YELLOW
Clarity Grade VVS 2



ADDITIONAL GRADING INFORMATION

Polish EXCELLENT
Symmetry EXCELLENT
Fluorescence NONE

Inscription(s) IGI
Comments: This Laboratory Grown Diamond was created by Chemical Vapor Deposition (CVD) growth process.



Summary table of report details including Date, Report No, Description, Measurements, Carat Weight, Color Grade, Clarity Grade, Depth, Table, Girdle, Very Thick to Extremely Thick (Faceted), Culet, Polish, Symmetry, Fluorescence, Inscription(s), and Comments.