



ELECTRONIC COPY

Report verification at igi.org

DIAMOND REPORT

September 23, 2024
 IGI Report Number
 Description **NATURAL DIAMOND**
 Shape and Cutting Style **OVAL BRILLIANT**
 Measurements **11.12 X 7.69 X 4.66 MM**

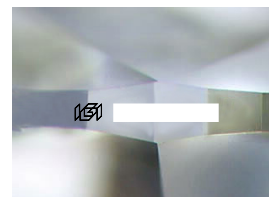
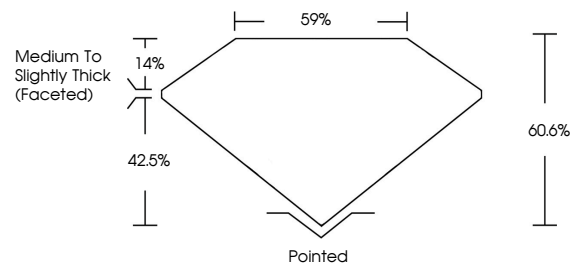
GRADING RESULTS

Carat Weight **2.60 CARATS**
 Color Grade **J**
 Clarity Grade **INTERNALLY FLAWLESS**
 Cut Grade **VERY GOOD**

ADDITIONAL GRADING INFORMATION

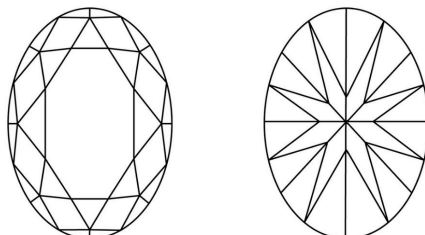
Polish **EXCELLENT**
 Symmetry **EXCELLENT**
 Fluorescence **NONE**
 Inscription(s)

PROPORTIONS



Sample Image Used

CLARITY CHARACTERISTICS



KEY TO SYMBOLS

Red symbols indicate internal characteristics.
 Green symbols indicate external characteristics.

COLOR

D - F	G - J	K - M	N - R	S - Z	FANCY
Colorless	Near Colorless	Slightly Tinted	Very Light Color	Light Color	

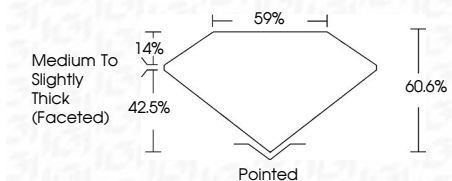
CLARITY

IF	VS ¹⁻²	VS ¹⁻²	SI ¹⁻²	I ¹⁻³
Internally Flawless	Very Very Slightly Included	Very Slightly Included	Slightly Included	Included

September 23, 2024
 IGI Report Number
 Description **NATURAL DIAMOND**
 Shape and Cutting Style **OVAL BRILLIANT**
 Measurements **11.12 X 7.69 X 4.66 MM**

GRADING RESULTS

Carat Weight **2.60 CARATS**
 Color Grade **J**
 Clarity Grade **INTERNALLY FLAWLESS**
 Cut Grade **VERY GOOD**



ADDITIONAL GRADING INFORMATION

Polish **EXCELLENT**
 Symmetry **EXCELLENT**
 Fluorescence **NONE**
 Inscription(s)



IGI

September 23, 2024
 IGI Report No **OVAL BRILLIANT**
 11.12 X 7.69 X 4.66 MM
 2.60 CARATS
 J
 VERY GOOD
 60.6%
 59%
 Medium to Slightly Thick (Faceted)
 Pointed
 EXCELLENT
 EXCELLENT
 NONE
 IGI

