



LABORATORY GROWN DIAMOND REPORT

May 9, 2026
IGI Report Number
Description **LABORATORY GROWN DIAMOND**
Shape and Cutting Style **PEAR BRILLIANT**
Measurements **7.91 X 5.29 X 3.27 MM**

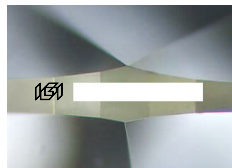
GRADING RESULTS

Carat Weight **0.82 CARAT**
Color Grade **D**
Clarity Grade **VVS 2**

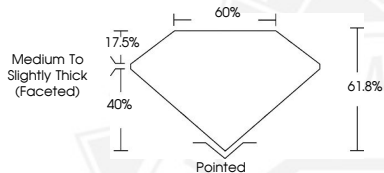
ADDITIONAL GRADING INFORMATION


Polish **VERY GOOD**
Symmetry **VERY GOOD**
Fluorescence **NONE**

Inscription(s) 
Comments: This Laboratory Grown Diamond was created by
Chemical Vapor Deposition (CVD) growth process.
Type IIa




Sample Image Used



May 9, 2026
IGI Report Number
PEAR BRILLIANT
LABORATORY GROWN DIAMOND
7.91 X 5.29 X 3.27 MM
Carat Weight **0.82 CARAT**
Color Grade **D**
Clarity Grade **VVS 2**
Polish **VERY GOOD**
Symmetry **VERY GOOD**
Fluorescence **NONE**
Inscription(s) 

Comments: This Laboratory Grown Diamond was created by
Chemical Vapor Deposition (CVD) growth process. Type IIa



May 9, 2026
IGI Report Number
PEAR BRILLIANT
LABORATORY GROWN DIAMOND
7.91 X 5.29 X 3.27 MM
Carat Weight **0.82 CARAT**
Color Grade **D**
Clarity Grade **VVS 2**
Polish **VERY GOOD**
Symmetry **VERY GOOD**
Fluorescence **NONE**
Inscription(s) 

Comments: This Laboratory Grown Diamond was created by
Chemical Vapor Deposition (CVD) growth process. Type IIa



THIS DOCUMENT WAS PRODUCED WITH THE FOLLOWING SECURITY MEASURES: SPECIAL DOCUMENT PAPER, INK SCREENS, WATERMARK, BACKGROUND DESIGNS, HOLOGRAM AND OTHER SECURITY FEATURES NOT LISTED AND DO EXCEED DOCUMENT SECURITY INDUSTRY GUIDELINES.