



**ELECTRONIC COPY**

Report verification at [igi.org](http://igi.org)

**LABORATORY GROWN DIAMOND REPORT**

June 8, 2026  
 IGI Report Number  
 Description **LABORATORY GROWN DIAMOND**  
 Shape and Cutting Style **PEAR BRILLIANT**  
 Measurements **10.82 X 6.99 X 4.49 MM**

**GRADING RESULTS**

Carat Weight **2.00 CARATS**  
 Color Grade **FANCY VIVID BLUE**  
 Clarity Grade **VVS 2**

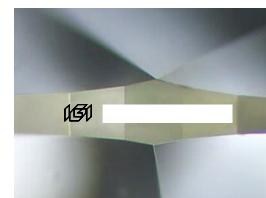
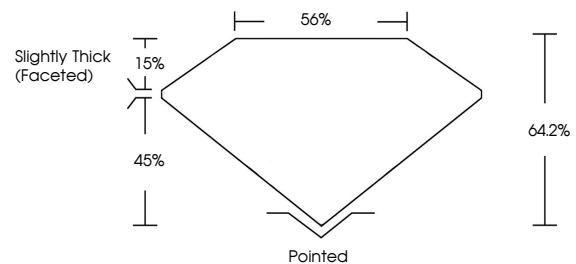
**ADDITIONAL GRADING INFORMATION**

Polish **EXCELLENT**  
 Symmetry **EXCELLENT**  
 Fluorescence **NONE**

Inscription(s)

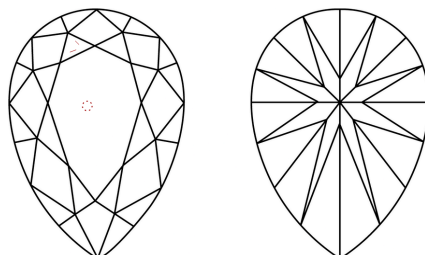
Comments: This Laboratory Grown Diamond was created by High Pressure High Temperature (HPHT) growth process.  
 Indications of post-growth treatment.

**PROPORTIONS**



Sample Image Used

**CLARITY CHARACTERISTICS**



**KEY TO SYMBOLS**

Red symbols indicate internal characteristics.  
 Green symbols indicate external characteristics.

**COLOR**

D E F G H I J Faint Very Light Light

**CLARITY**

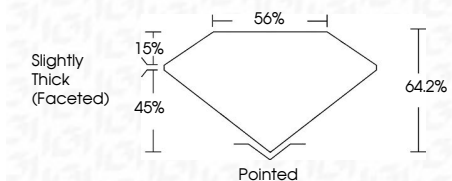
FL	IF	VVS <sup>1-2</sup>	VS <sup>1-2</sup>	SI <sup>1-2</sup>	I <sup>1-3</sup>
Flawless	Internally Flawless	Very Very Slightly Included	Very Slightly Included	Slightly Included	Included



June 8, 2026  
 IGI Report Number  
 Description **LABORATORY GROWN DIAMOND**  
 Shape and Cutting Style **PEAR BRILLIANT**  
 Measurements **10.82 X 6.99 X 4.49 MM**

**GRADING RESULTS**

Carat Weight **2.00 CARATS**  
 Color Grade **FANCY VIVID BLUE**  
 Clarity Grade **VVS 2**



**ADDITIONAL GRADING INFORMATION**

Polish **EXCELLENT**  
 Symmetry **EXCELLENT**  
 Fluorescence **NONE**

Inscription(s)

Comments: This Laboratory Grown Diamond was created by High Pressure High Temperature (HPHT) growth process.  
 Indications of post-growth treatment.



**IGI**



June 8, 2026  
 IGI Report No  
**PEAR BRILLIANT**  
 10.82 X 6.99 X 4.49 MM  
 2.00 CARATS  
 Fancy Vivid Blue  
 VVS 2  
 64.2%  
 85%  
 Slightly Thick (Faceted)  
 Pointed  
 EXCELLENT  
 EXCELLENT  
 NONE  
 IGI

Comments: This Laboratory Grown Diamond was created by High Pressure High Temperature (HPHT) growth process. Indications of post-growth treatment.