



ELECTRONIC COPY

LABORATORY GROWN DIAMOND REPORT

Report verification at igi.org

LABORATORY GROWN DIAMOND REPORT

LABORATORY GROWN DIAMOND REPORT

LABORATORY GROWN DIAMOND REPORT

October 20, 2023
IGI Report Number
Description LABORATORY GROWN DIAMOND
Shape and Cutting Style OVAL BRILLIANT
Measurements 9.11 X 6.40 X 3.94 MM

GRADING RESULTS

Carat Weight 1.50 CARAT
Color Grade G
Clarity Grade VS 1

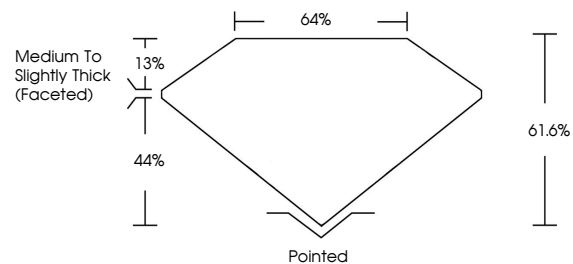
ADDITIONAL GRADING INFORMATION

Polish EXCELLENT
Symmetry EXCELLENT
Fluorescence NONE

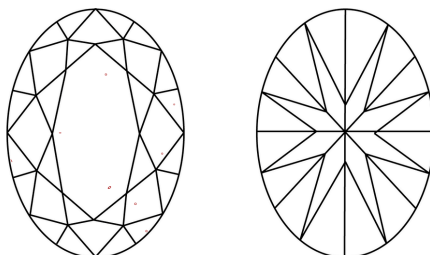
Inscription(s) IGI

Comments: This Laboratory Grown Diamond was created by Chemical Vapor Deposition (CVD) growth process and may include post-growth treatment. Type IIa

PROPORTIONS



CLARITY CHARACTERISTICS



KEY TO SYMBOLS

Red symbols indicate internal characteristics.
Green symbols indicate external characteristics.

GRADING SCALES

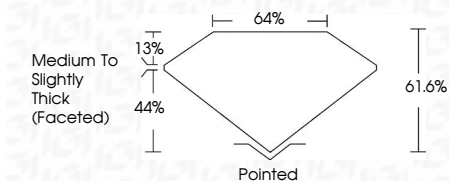
CLARITY

Table mapping clarity grades (IF, VVS, VS, SI, I) to descriptions (Internally Flawless, Very Very Slightly Included, etc.)

COLOR

Table mapping color grades (D, E, F, G, H, I, J) to descriptions (Faint, Very Light, Light)

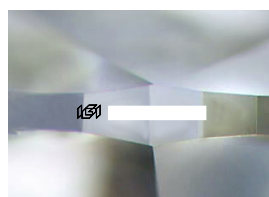
October 20, 2023
IGI Report Number
Description LABORATORY GROWN DIAMOND
Shape and Cutting Style OVAL BRILLIANT
Measurements 9.11 X 6.40 X 3.94 MM
GRADING RESULTS
Carat Weight 1.50 CARAT
Color Grade G
Clarity Grade VS 1



ADDITIONAL GRADING INFORMATION

Polish EXCELLENT
Symmetry EXCELLENT
Fluorescence NONE
Inscription(s) IGI

Comments: This Laboratory Grown Diamond was created by Chemical Vapor Deposition (CVD) growth process and may include post-growth treatment. Type IIa



Sample Image Used



October 20, 2023
IGI Report No. OVAL BRILLIANT
9.11 X 6.40 X 3.94 MM
Carat Weight 1.50 CARAT
Color Grade G
Clarity Grade VS 1
Table 61.6%
Depth 44%
Girdle Medium to Slightly Thick (Faceted)
Culet Pointed
Polish EXCELLENT
Symmetry EXCELLENT
Fluorescence NONE
Inscription(s) IGI

Comments: This Laboratory Grown Diamond was created by Chemical Vapor Deposition (CVD) growth process and may include post-growth treatment. Type IIa