



ELECTRONIC COPY

Report verification at igi.org

LABORATORY GROWN DIAMOND REPORT

September 6, 2024
IGI Report Number
Description LABORATORY GROWN DIAMOND
Shape and Cutting Style LOZENGE STEP CUT
Measurements 13.08 X 7.59 X 4.61 MM

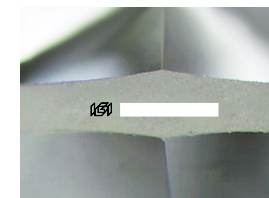
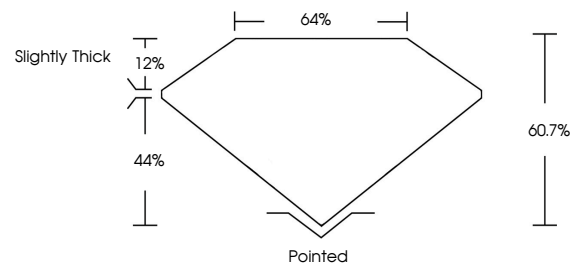
GRADING RESULTS

Carat Weight 2.15 CARATS
Color Grade E
Clarity Grade VS 1

ADDITIONAL GRADING INFORMATION

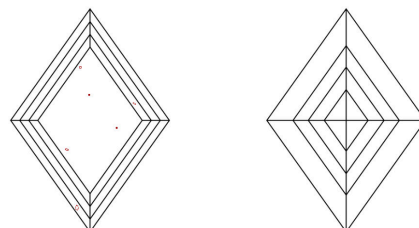
Polish EXCELLENT
Symmetry EXCELLENT
Fluorescence NONE
Inscription(s) IGI
Comments: This Laboratory Grown Diamond was created by Chemical Vapor Deposition (CVD) growth process. Type IIa

PROPORTIONS



Sample Image Used

CLARITY CHARACTERISTICS



KEY TO SYMBOLS

Red symbols indicate internal characteristics.
Green symbols indicate external characteristics.

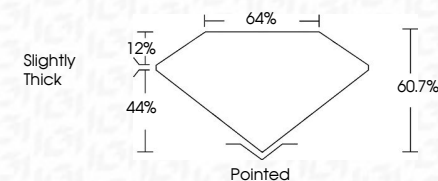
COLOR

D E F G H I J Faint Very Light Light

CLARITY

IF VS 1-2 VS 1-2 SI 1-2 I 1-3
Internally Flawless Very Very Slightly Included Very Slightly Included Slightly Included Included

September 6, 2024
IGI Report Number
Description LABORATORY GROWN DIAMOND
Shape and Cutting Style LOZENGE STEP CUT
Measurements 13.08 X 7.59 X 4.61 MM
GRADING RESULTS
Carat Weight 2.15 CARATS
Color Grade E
Clarity Grade VS 1



ADDITIONAL GRADING INFORMATION

Polish EXCELLENT
Symmetry EXCELLENT
Fluorescence NONE
Inscription(s) IGI
Comments: This Laboratory Grown Diamond was created by Chemical Vapor Deposition (CVD) growth process. Type IIa



IGI

September 6, 2024
IGI Report No
LOZENGE STEP CUT
13.08 X 7.59 X 4.61 MM
2.15 CARATS E
Color Grade VS 1
Depth 60.7%
Table 44%
Girdle Slightly Thick
Culet Pointed
Polish EXCELLENT
Symmetry EXCELLENT
Fluorescence NONE
Inscription(s) IGI
Comments: This Laboratory Grown Diamond was created by Chemical Vapor Deposition (CVD) growth process. Type IIa