

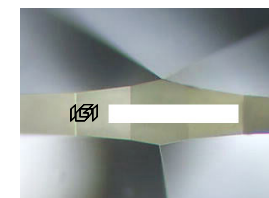
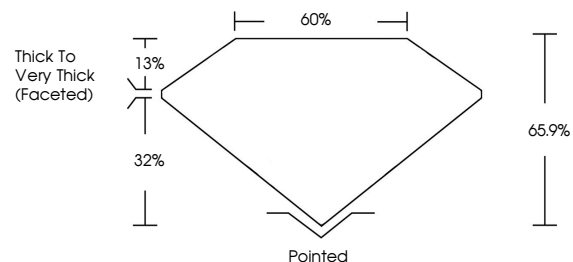


ELECTRONIC COPY

Report verification at igi.org

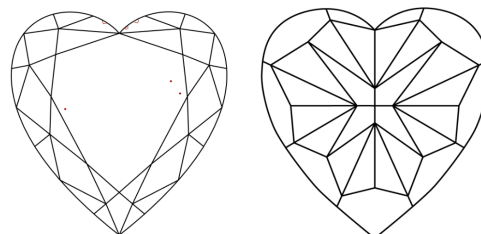
LABORATORY GROWN DIAMOND REPORT

PROPORTIONS



Sample Image Used

CLARITY CHARACTERISTICS



KEY TO SYMBOLS

Red symbols indicate internal characteristics.
Green symbols indicate external characteristics.

COLOR

D E F G H I J Faint Very Light Light

CLARITY

FL	IF	VS ¹⁻²	VS ¹⁻²	SI ¹⁻²	I ¹⁻³
Flawless	Internally Flawless	Very Very Slightly Included	Very Slightly Included	Slightly Included	Included

December 19, 2025

IGI Report Number

Description **LABORATORY GROWN DIAMOND**

Shape and Cutting Style **HEART MODIFIED BRILLIANT**

Measurements **6.30 X 7.30 X 4.81 MM**

GRADING RESULTS

Carat Weight **1.51 CARAT**

Color Grade **FANCY VIVID PINK**

Clarity Grade **VVS 2**

December 19, 2025

IGI Report Number

Description **LABORATORY GROWN DIAMOND**

Shape and Cutting Style **HEART MODIFIED BRILLIANT**

Measurements **6.30 X 7.30 X 4.81 MM**

GRADING RESULTS

Carat Weight **1.51 CARAT**

Color Grade **FANCY VIVID PINK**

Clarity Grade **VVS 2**

ADDITIONAL GRADING INFORMATION

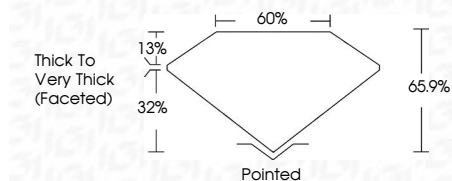
Polish **EXCELLENT**

Symmetry **VERY GOOD**

Fluorescence **SLIGHT**

Inscription(s)

Comments: This Laboratory Grown Diamond was created by Chemical Vapor Deposition (CVD) growth process. Indications of post-growth treatment.



ADDITIONAL GRADING INFORMATION

Polish **EXCELLENT**

Symmetry **VERY GOOD**

Fluorescence **SLIGHT**

Inscription(s)

Comments: This Laboratory Grown Diamond was created by Chemical Vapor Deposition (CVD) growth process. Indications of post-growth treatment.



IGI



December 19, 2025	1.51 CARAT
IGI Report No	FANCY VIVID PINK
HEART MODIFIED BRILLIANT	VVS 2
6.30 X 7.30 X 4.81 MM	65.9%
Carat Weight	0.0%
Color Grade	Thick to Very Thick (Faceted)
Clarity Grade	Pointed
Depth	EXCELLENT
Table	VERY GOOD
Girdle	SLIGHT
Culet	
Polish	
Symmetry	
Fluorescence	
Inscription(s)	

Comments: This Laboratory Grown Diamond was created by Chemical Vapor Deposition (CVD) growth process. Indications of post-growth treatment.