

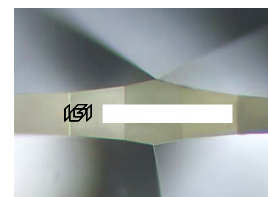
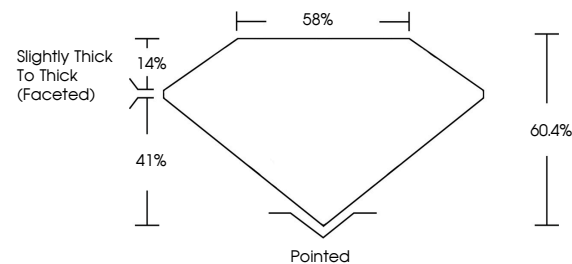


ELECTRONIC COPY

LABORATORY GROWN DIAMOND REPORT

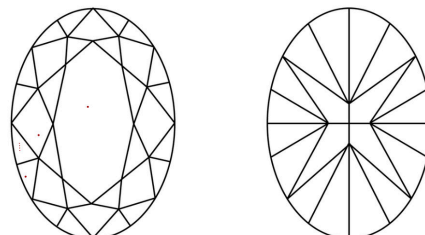
Report verification at igi.org

PROPORTIONS



Sample Image Used

CLARITY CHARACTERISTICS



KEY TO SYMBOLS

Red symbols indicate internal characteristics.
Green symbols indicate external characteristics.

COLOR

D E F G H I J Faint Very Light Light

CLARITY

IF VS¹⁻² VS¹⁻² S¹⁻² |¹⁻³

Internally Flawless	Very Very Slightly Included	Very Slightly Included	Slightly Included	Included
------------------------	--------------------------------	---------------------------	----------------------	----------

LABORATORY GROWN DIAMOND REPORT



May 16, 2025

IGI Report Number

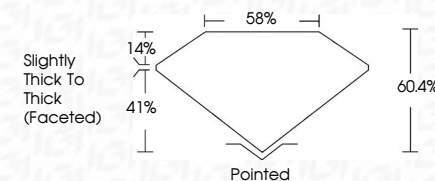
Description **LABORATORY GROWN DIAMOND**Shape and Cutting Style **OVAL BRILLIANT**

Measurements 11.50 X 8.10 X 4.89 MM

GRADING RESULTS

Carat Weight **3.00 CARATS**

Color Grade

Clarity Grade WS 2

ADDITIONAL GRADING INFORMATION

Polish **EXCELLENT**

Symmetry **EXCELLENT**

Fluorescence **NONE**Inscription(s)

Comments: This Laboratory Grown Diamond was created by Chemical Vapor Deposition (CVD) growth process.
Type IIa



May 14, 2025	GI Report No.	2025051401
OVAL BRILLIANT	Weight	0.90 CARATS
11.50 X 8.10 X 4.89 MM	Color Grade	E
	Clarity Grade	VS2
	Depth	60.6%
	Table	56%
	Grade	Slightly Thick to Thick (faceted)
	Quiet	Pointed
	Polish	EXCELLENT
	Symmetry	EXCELLENT
	Fluorescence	NONE
	Inscriptions(s)	18K
Comments:		
The Laboratory Grown Diamond was certified for chemical vapor deposition (CVD) growth process.		
Type IIA		

