



ELECTRONIC COPY

Report verification at igi.org

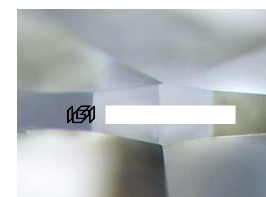
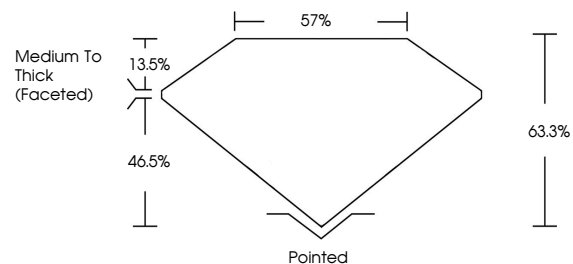
LABORATORY GROWN DIAMOND REPORT

May 12, 2026
 IGI Report Number
 Description **LABORATORY GROWN DIAMOND**
 Shape and Cutting Style **OVAL BRILLIANT**
 Measurements **10.68 X 7.52 X 4.76 MM**
GRADING RESULTS
 Carat Weight **2.40 CARATS**
 Color Grade **E**
 Clarity Grade **VVS 2**

ADDITIONAL GRADING INFORMATION

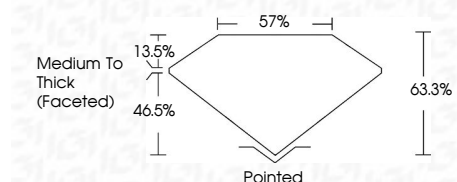
Polish **EXCELLENT**
 Symmetry **EXCELLENT**
 Fluorescence **NONE**
 Inscription(s) 
 Comments: This Laboratory Grown Diamond was created by Chemical Vapor Deposition (CVD) growth process.
 Type IIa

PROPORTIONS



Sample Image Used

May 12, 2026
 IGI Report Number
 Description **LABORATORY GROWN DIAMOND**
 Shape and Cutting Style **OVAL BRILLIANT**
 Measurements **10.68 X 7.52 X 4.76 MM**
GRADING RESULTS
 Carat Weight **2.40 CARATS**
 Color Grade **E**
 Clarity Grade **VVS 2**



COLOR

D E F G H I J Faint Very Light Light

CLARITY

FL	IF	VVS ¹⁻²	VS ¹⁻²	SI ¹⁻²	I ¹⁻³
Flawless	Internally Flawless	Very Very Slightly Included	Very Slightly Included	Slightly Included	Included

ADDITIONAL GRADING INFORMATION

Polish **EXCELLENT**
 Symmetry **EXCELLENT**
 Fluorescence **NONE**
 Inscription(s) 
 Comments: This Laboratory Grown Diamond was created by Chemical Vapor Deposition (CVD) growth process.
 Type IIa



May 12, 2026
 IGI Report No
OVAL BRILLIANT
 10.68 X 7.52 X 4.76 MM
 2.40 CARATS
 Color Grade **E**
 Clarity Grade **VVS 2**
 Table **63.3%**
 Girdle **57%**
 Medium To Thick (Faceted)
 Culet **Pointed**
 Polish **EXCELLENT**
 Symmetry **EXCELLENT**
 Fluorescence **NONE**
 Inscription(s) 
 Comments: This Laboratory Grown Diamond was created by Chemical Vapor Deposition (CVD) growth process.
 Type IIa