



ELECTRONIC COPY

Report verification at igi.org

DIAMOND REPORT

August 7, 2025
 IGI Report Number
 Description **NATURAL DIAMOND**
 Shape and Cutting Style **PEAR BRILLIANT**
 Measurements **9.05 X 5.81 X 3.66 MM**

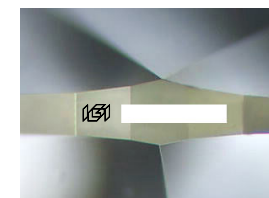
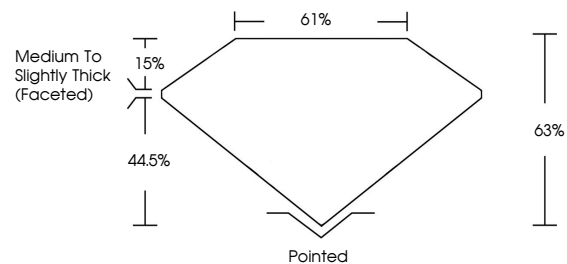
GRADING RESULTS

Carat Weight **1.13 CARAT**
 Color Grade **K**
 Clarity Grade **VS 1**
 Cut Grade **EXCELLENT**

ADDITIONAL GRADING INFORMATION

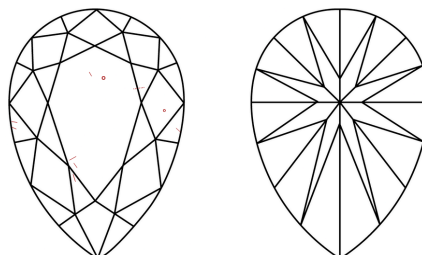
Polish **EXCELLENT**
 Symmetry **EXCELLENT**
 Fluorescence **NONE**
 Inscription(s)

PROPORTIONS



Sample Image Used

CLARITY CHARACTERISTICS



KEY TO SYMBOLS

Red symbols indicate internal characteristics.
 Green symbols indicate external characteristics.

COLOR

D - F	G - J	K - M	N - R	S - Z	FANCY
Colorless	Near Colorless	Slightly Tinted	Very Light Color	Light Color	

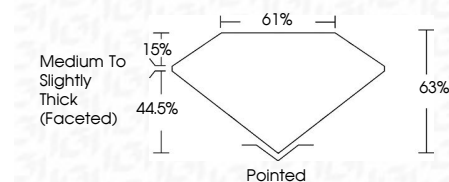
CLARITY

IF	VVS ¹⁻²	VS ¹⁻²	SI ¹⁻²	I ¹⁻³
Internally Flawless	Very Very Slightly Included	Very Slightly Included	Slightly Included	Included

August 7, 2025
 IGI Report Number
 Description **NATURAL DIAMOND**
 Shape and Cutting Style **PEAR BRILLIANT**
 Measurements **9.05 X 5.81 X 3.66 MM**

GRADING RESULTS

Carat Weight **1.13 CARAT**
 Color Grade **K**
 Clarity Grade **VS 1**
 Cut Grade **EXCELLENT**



ADDITIONAL GRADING INFORMATION

Polish **EXCELLENT**
 Symmetry **EXCELLENT**
 Fluorescence **NONE**
 Inscription(s)



IGI



August 7, 2025
 IGI Report No
PEAR BRILLIANT
 9.05 X 5.81 X 3.66 MM
 1.13 CARAT
 K
 VS 1
 EXCELLENT
 65%
 61%
 Medium To Slightly Thick (Faceted)
 Pointed
 EXCELLENT
 EXCELLENT
 NONE