



ELECTRONIC COPY

Report verification at igi.org

LABORATORY GROWN DIAMOND REPORT

April 20, 2026
IGI Report Number
Description **LABORATORY GROWN DIAMOND**

Shape and Cutting Style **MARQUISE MODIFIED BRILLIANT**

Measurements **12.49 X 5.89 X 3.97 MM**

GRADING RESULTS

Carat Weight **2.07 CARATS**

Color Grade **FANCY GREENISH BLUE**

Clarity Grade **VVS 2**

ADDITIONAL GRADING INFORMATION

Polish **EXCELLENT**

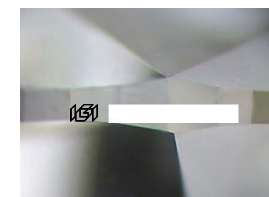
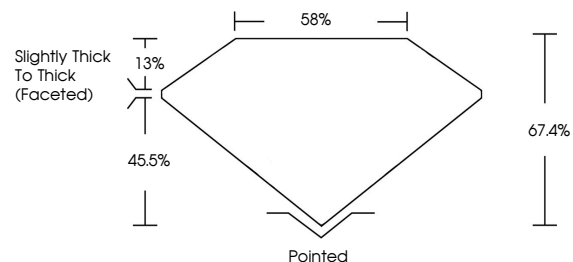
Symmetry **EXCELLENT**

Fluorescence **NONE**

Inscription(s)

Comments: This Laboratory Grown Diamond was created by Chemical Vapor Deposition (CVD) growth process.
Indications of post-growth treatment.

PROPORTIONS



Sample Image Used

CLARITY CHARACTERISTICS

KEY TO SYMBOLS

Red symbols indicate internal characteristics.
Green symbols indicate external characteristics.

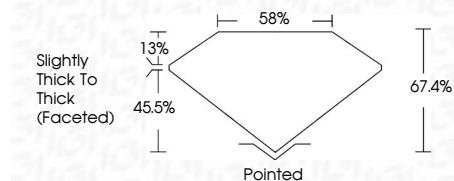
COLOR

D E F G H I J Faint Very Light Light

CLARITY

FL	IF	VVS ¹⁻²	VS ¹⁻²	SI ¹⁻²	I ¹⁻³
Flawless	Internally Flawless	Very Very Slightly Included	Very Slightly Included	Slightly Included	Included

April 20, 2026
IGI Report Number
Description **LABORATORY GROWN DIAMOND**
Shape and Cutting Style **MARQUISE MODIFIED BRILLIANT**
Measurements **12.49 X 5.89 X 3.97 MM**
GRADING RESULTS
Carat Weight **2.07 CARATS**
Color Grade **FANCY GREENISH BLUE**
Clarity Grade **VVS 2**



ADDITIONAL GRADING INFORMATION

Polish **EXCELLENT**

Symmetry **EXCELLENT**

Fluorescence **NONE**

Inscription(s)

Comments: This Laboratory Grown Diamond was created by Chemical Vapor Deposition (CVD) growth process.
Indications of post-growth treatment.



April 20, 2026	IGI Report No	MARQUISE MODIFIED BRILLIANT
12.49 X 5.89 X 3.97 MM	Carat Weight	2.07 CARATS
	Color Grade	FANCY GREENISH BLUE
	Clarity Grade	VVS 2
	Table	58%
	Depth	67.4%
	Graile	Slightly Thick To Thick (Faceted)
	Culet	Pointed
	Polish	EXCELLENT
	Symmetry	EXCELLENT
	Fluorescence	NONE
	Inscription(s)	

Comments: This Laboratory Grown Diamond was created by Chemical Vapor Deposition (CVD) growth process.
Indications of post-growth treatment.