



Report verification at igi.org

ELECTRONIC COPY

LABORATORY GROWN DIAMOND REPORT

October 10, 2024
 IGI Report Number
 Description **LABORATORY GROWN DIAMOND**
 Shape and Cutting Style **OVAL MODIFIED BRILLIANT**
 Measurements **10.42 X 7.06 X 4.99 MM**

GRADING RESULTS

Carat Weight **2.97 CARATS**
 Color Grade **FANCY VIVID PINK**
 Clarity Grade **VS 1**

ADDITIONAL GRADING INFORMATION

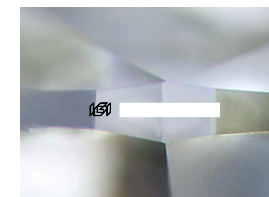
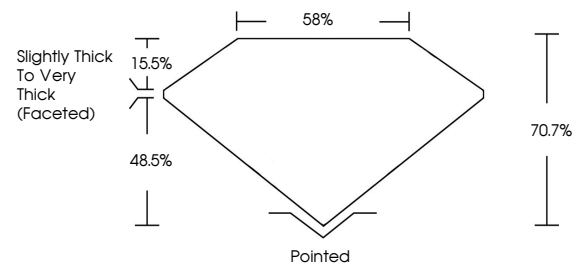
Polish **EXCELLENT**
 Symmetry **EXCELLENT**
 Fluorescence **SLIGHT**

Inscription(s)

Comments: This Laboratory Grown Diamond was created by Chemical Vapor Deposition (CVD) growth process.
 Indications of post-growth treatment.

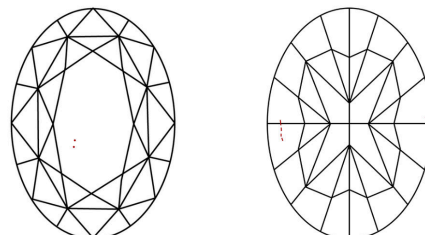
Secondary color: Brown

PROPORTIONS



Sample Image Used

CLARITY CHARACTERISTICS



KEY TO SYMBOLS

Red symbols indicate internal characteristics.
 Green symbols indicate external characteristics.

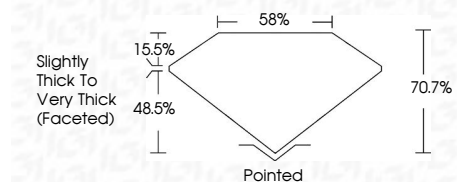
COLOR

D	E	F	G	H	I	J	Faint	Very Light	Light
---	---	---	---	---	---	---	-------	------------	-------

CLARITY

IF	VS ¹⁻²	VS ¹⁻²	SI ¹⁻²	I ¹⁻³
Internally Flawless	Very Very Slightly Included	Very Slightly Included	Slightly Included	Included

October 10, 2024
 IGI Report Number
 Description **LABORATORY GROWN DIAMOND**
 Shape and Cutting Style **OVAL MODIFIED BRILLIANT**
 Measurements **10.42 X 7.06 X 4.99 MM**
GRADING RESULTS
 Carat Weight **2.97 CARATS**
 Color Grade **FANCY VIVID PINK**
 Clarity Grade **VS 1**



ADDITIONAL GRADING INFORMATION

Polish **EXCELLENT**
 Symmetry **EXCELLENT**
 Fluorescence **SLIGHT**

Inscription(s)
 Comments: This Laboratory Grown Diamond was created by Chemical Vapor Deposition (CVD) growth process.
 Indications of post-growth treatment.

Secondary color: Brown



October 10, 2024	IGI Report No	IGI Report No	2.97 CARATS
OVAL MODIFIED BRILLIANT	10.42 X 7.06 X 4.99 MM	FANCY VIVID PINK	VS 1
Carat Weight	Color Grade	Clarity Grade	Table
2.97	FANCY VIVID PINK	VS 1	70.7%
Depth	Girdle	Culet	Polish
4.99	Slightly Thick To Very Thick (Faceted)	Pointed	EXCELLENT
Symmetry	Fluorescence	Inscription(s)	EXCELLENT
EXCELLENT	SLIGHT		SLIGHT

Comments: This Laboratory Grown Diamond was created by Chemical Vapor Deposition (CVD) growth process. Indications of post-growth treatment. Secondary color: Brown