



ELECTRONIC COPY

Report verification at igi.org



May 6, 2026

IGI Report Number

Description LABORATORY GROWN DIAMOND

Shape and Cutting Style ROUND BRILLIANT

Measurements 8.88 - 8.91 X 5.35 MM

GRADING RESULTS

Carat Weight 2.58 CARATS

Color Grade D

Clarity Grade VVS 2

Cut Grade IDEAL

May 6, 2026

IGI Report Number

Description LABORATORY GROWN DIAMOND

Shape and Cutting Style ROUND BRILLIANT

Measurements 8.88 - 8.91 X 5.35 MM

GRADING RESULTS

Carat Weight 2.58 CARATS

Color Grade D

Clarity Grade VVS 2

Cut Grade IDEAL

ADDITIONAL GRADING INFORMATION

Polish EXCELLENT

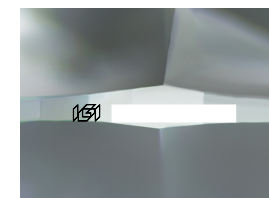
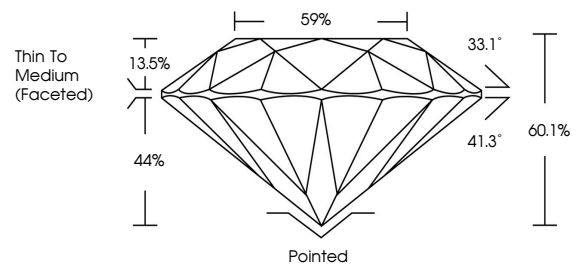
Symmetry EXCELLENT

Fluorescence NONE

Inscription(s)

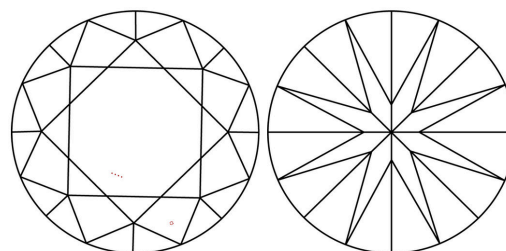
Comments: This Laboratory Grown Diamond was created by Chemical Vapor Deposition (CVD) growth process. Type IIa

PROPORTIONS



Sample Image Used

CLARITY CHARACTERISTICS



KEY TO SYMBOLS

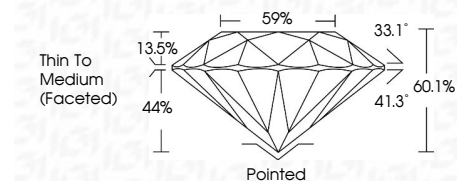
Red symbols indicate internal characteristics. Green symbols indicate external characteristics.

COLOR

D E F G H I J Faint Very Light Light

CLARITY

FL IF VVS 1-2 VS 1-2 SI 1-2 I 1-3
Flawless Internally Flawless Very Very Slightly Included Very Slightly Included Slightly Included Included



ADDITIONAL GRADING INFORMATION

Polish EXCELLENT

Symmetry EXCELLENT

Fluorescence NONE

Inscription(s)

Comments: This Laboratory Grown Diamond was created by Chemical Vapor Deposition (CVD) growth process. Type IIa



IGI



Summary table of report details: May 6, 2026, IGI Report No, ROUND BRILLIANT, 8.88 - 8.91 X 5.35 MM, 2.58 CARATS, D, VVS 2, IDEAL, 60.1%, 59%, Thin To Medium (Faceted), Pointed, EXCELLENT, EXCELLENT, NONE, , Comments: This Laboratory Grown Diamond was created by Chemical Vapor Deposition (CVD) growth process. Type IIa