



**INTERNATIONAL
GEMOLOGICAL
INSTITUTE**

LABORATORY GROWN DIAMOND REPORT

December 31, 2024

IGI Report Number

Description

Shape and Cutting Style

Measurements

LABORATORY GROWN DIAMOND

PEAR BRILLIANT

5.80 X 5.68 X 3.02 MM

GRADING RESULTS

Carat Weight

Color Grade

Clarity Grade

0.72 CARAT

FANCY PINK

SI 1

ADDITIONAL GRADING INFORMATION

Polish

Symmetry

Fluorescence

Inscription(s)

VERY GOOD

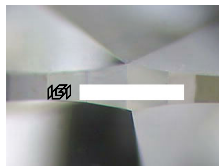
VERY GOOD

SLIGHT

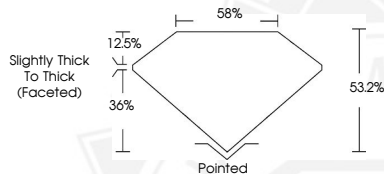


Comments: This Laboratory Grown Diamond was created by Chemical Vapor Deposition (CVD) growth process. Indications of post-growth treatment.

ELECTRONIC COPY



Sample Image Used



December 31, 2024

IGI Report Number

PEAR BRILLIANT

LABORATORY GROWN DIAMOND

5.80 X 5.68 X 3.02 MM

Carat Weight **0.72 CARAT**

Color Grade **FANCY PINK**

Clarity Grade **SI 1**

Polish **VERY GOOD**

Symmetry **VERY GOOD**

Fluorescence **SLIGHT**

Inscription(s)

Comments: This Laboratory Grown Diamond was created by Chemical Vapor Deposition (CVD) growth process. Indications of post-growth treatment.

December 31, 2024

IGI Report Number

PEAR BRILLIANT

LABORATORY GROWN DIAMOND

5.80 X 5.68 X 3.02 MM

Carat Weight **0.72 CARAT**

Color Grade **FANCY PINK**

Clarity Grade **SI 1**

Polish **VERY GOOD**

Symmetry **VERY GOOD**

Fluorescence **SLIGHT**

Inscription(s)

Comments: This Laboratory Grown Diamond was created by Chemical Vapor Deposition (CVD) growth process. Indications of post-growth treatment.



THIS DOCUMENT WAS PRODUCED WITH THE FOLLOWING SECURITY MEASURES: SPECIAL DOCUMENT PAPER, INK SCREENS, WATERMARK, BACKGROUND DESIGN, HOLOGRAM AND OTHER SECURITY FEATURES NOT LISTED AND DO EXCEED DOCUMENT SECURITY INDUSTRY GUIDELINES.

For terms & conditions and to verify this report, please visit www.igi.org