



LABORATORY GROWN DIAMOND REPORT

August 14, 2025

IGI Report Number

Description

LABORATORY GROWN DIAMOND

Shape and Cutting Style

ROUND BRILLIANT

Measurements

3.52 - 3.54 X 2.14 MM

GRADING RESULTS

Carat Weight

0.17 CARAT

Color Grade

FANCY INTENSE PINK

Clarity Grade

VVS 2

Cut Grade

VERY GOOD

ADDITIONAL GRADING INFORMATION

Polish

VERY GOOD

Symmetry

VERY GOOD

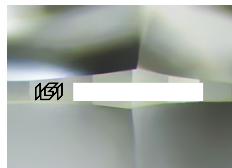
Fluorescence

SLIGHT

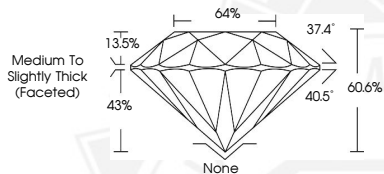
Inscription(s)



Comments: This Laboratory Grown Diamond was created by High Pressure High Temperature (HPHT) growth process. Indications of post-growth treatment.



Sample Image Used



August 14, 2025

IGI Report Number

ROUND BRILLIANT

LABORATORY GROWN DIAMOND

3.52 - 3.54 X 2.14 MM

Carat Weight

0.17 CARAT

Color Grade

FANCY INTENSE

PINK

Clarity Grade

VVS 2

Cut Grade

VERY GOOD

Polish

VERY GOOD

Symmetry

VERY GOOD

Fluorescence

SLIGHT

Inscription(s)



Comments: This Laboratory Grown Diamond was created by High Pressure High Temperature (HPHT) growth process. Indications of post-growth treatment.

August 14, 2025

IGI Report Number

ROUND BRILLIANT

LABORATORY GROWN DIAMOND

3.52 - 3.54 X 2.14 MM

Carat Weight

0.17 CARAT

Color Grade

FANCY INTENSE

PINK

Clarity Grade

VVS 2

Cut Grade

VERY GOOD

Polish

VERY GOOD

Symmetry

VERY GOOD

Fluorescence

SLIGHT

Inscription(s)



Comments: This Laboratory Grown Diamond was created by High Pressure High Temperature (HPHT) growth process. Indications of post-growth treatment.



THIS DOCUMENT WAS PRODUCED WITH THE FOLLOWING SECURITY MEASURES: SPECIAL DOCUMENT PAPER, INK SCREENS, WATERMARK, BACKGROUND DESIGNS, HOLOGRAM AND OTHER SECURITY FEATURES NOT LISTED AND DO EXCEED DOCUMENT SECURITY INDUSTRY GUIDELINES.