



**ELECTRONIC COPY**

Report verification at [igi.org](http://igi.org)



April 15, 2026

IGI Report Number

Description **LABORATORY GROWN DIAMOND**

Shape and Cutting Style **CUT CORNERED  
RECTANGULAR MODIFIED  
BRILLIANT**

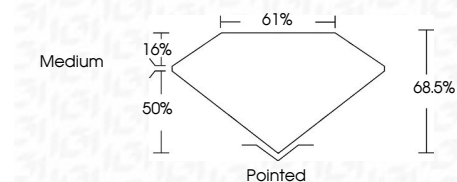
Measurements **10.12 X 7.11 X 4.87 MM**

**GRADING RESULTS**

Carat Weight **3.00 CARATS**

Color Grade **G**

Clarity Grade **VVS 2**



**ADDITIONAL GRADING INFORMATION**

Polish **EXCELLENT**

Symmetry **EXCELLENT**

Fluorescence **NONE**

Inscription(s)

Comments: This Laboratory Grown Diamond was created by Chemical Vapor Deposition (CVD) growth process. Type IIa



April 15, 2026	IGI Report No	CUT CORNERED RECT. MODIFIED BRILLIANT
10.12 X 7.11 X 4.87 MM	3.00 CARATS	G
Depth 50%	Clarity Grade VVS 2	Color Grade
Table 16%	Width 61%	Height 68.5%
Medium	Pointed	Polish EXCELLENT
		Symmetry EXCELLENT
		Fluorescence NONE
		Inscription(s)

Comments: This Laboratory Grown Diamond was created by Chemical Vapor Deposition (CVD) growth process. Type IIa

**LABORATORY GROWN DIAMOND REPORT**

April 15, 2026

IGI Report Number

Description **LABORATORY GROWN DIAMOND**

Shape and Cutting Style **CUT CORNERED RECTANGULAR  
MODIFIED BRILLIANT**

Measurements **10.12 X 7.11 X 4.87 MM**

**GRADING RESULTS**

Carat Weight **3.00 CARATS**

Color Grade **G**

Clarity Grade **VVS 2**

**ADDITIONAL GRADING INFORMATION**

Polish **EXCELLENT**

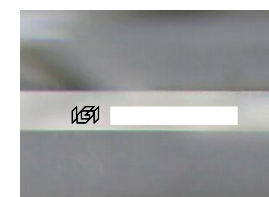
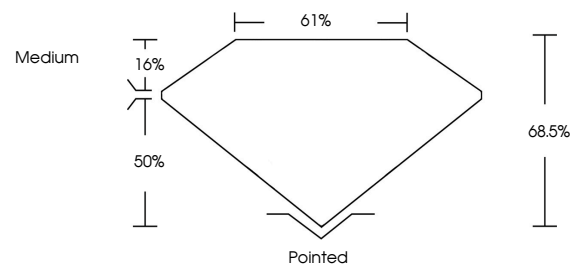
Symmetry **EXCELLENT**

Fluorescence **NONE**

Inscription(s)

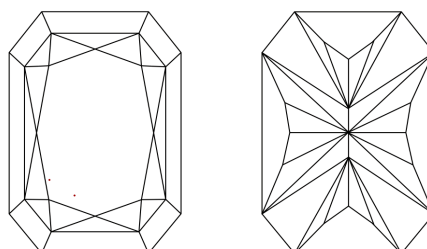
Comments: This Laboratory Grown Diamond was created by Chemical Vapor Deposition (CVD) growth process. Type IIa

**PROPORTIONS**



Sample Image Used

**CLARITY CHARACTERISTICS**



**KEY TO SYMBOLS**

Red symbols indicate internal characteristics.  
Green symbols indicate external characteristics.

**COLOR**

D E F G H I J Faint Very Light Light

**CLARITY**

FL	IF	VVS <sup>1-2</sup>	VS <sup>1-2</sup>	SI <sup>1-2</sup>	I <sup>1-3</sup>
Flawless	Internally Flawless	Very Very Slightly Included	Very Slightly Included	Slightly Included	Included