



**ELECTRONIC COPY**

Report verification at [igi.org](http://igi.org)

**LABORATORY GROWN DIAMOND REPORT**

January 24, 2026  
 IGI Report Number  
 Description **LABORATORY GROWN DIAMOND**  
 Shape and Cutting Style **ROUND BRILLIANT**  
 Measurements **9.25 - 9.32 X 5.54 MM**

**GRADING RESULTS**

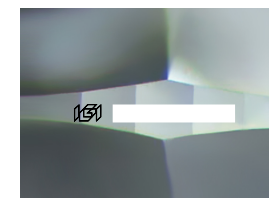
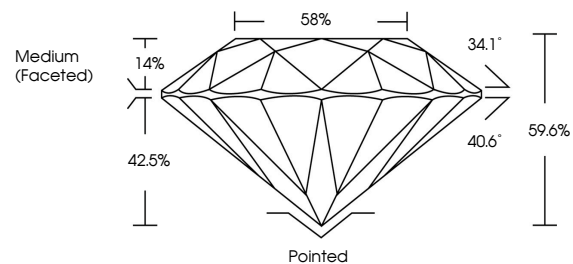
Carat Weight **2.89 CARATS**  
 Color Grade **F**  
 Clarity Grade **VVS 2**  
 Cut Grade **IDEAL**

**ADDITIONAL GRADING INFORMATION**

Polish **EXCELLENT**  
 Symmetry **EXCELLENT**  
 Fluorescence **NONE**  
 Inscription(s)

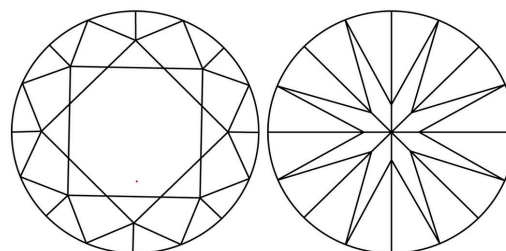
Comments: This Laboratory Grown Diamond was created by Chemical Vapor Deposition (CVD) growth process. Type IIa

**PROPORTIONS**



Sample Image Used

**CLARITY CHARACTERISTICS**



**KEY TO SYMBOLS**

Red symbols indicate internal characteristics.  
 Green symbols indicate external characteristics.

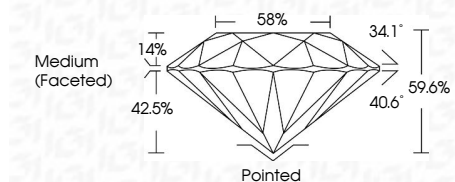
**COLOR**

D E F G H I J Faint Very Light Light

**CLARITY**

FL	IF	VVS <sup>1-2</sup>	VS <sup>1-2</sup>	SI <sup>1-2</sup>	I <sup>1-3</sup>
Flawless	Internally Flawless	Very Very Slightly Included	Very Slightly Included	Slightly Included	Included

January 24, 2026  
 IGI Report Number  
 Description **LABORATORY GROWN DIAMOND**  
 Shape and Cutting Style **ROUND BRILLIANT**  
 Measurements **9.25 - 9.32 X 5.54 MM**  
**GRADING RESULTS**  
 Carat Weight **2.89 CARATS**  
 Color Grade **F**  
 Clarity Grade **VVS 2**  
 Cut Grade **IDEAL**



**ADDITIONAL GRADING INFORMATION**

Polish **EXCELLENT**  
 Symmetry **EXCELLENT**  
 Fluorescence **NONE**  
 Inscription(s)   
 Comments: This Laboratory Grown Diamond was created by Chemical Vapor Deposition (CVD) growth process. Type IIa



January 24, 2026	2.89 CARATS	F	Pointed
IGI Report No	2.89 CARATS	VVS 2	EXCELLENT
ROUND BRILLIANT	2.89 CARATS	IDEAL	EXCELLENT
9.25 - 9.32 X 5.54 MM	2.89 CARATS	59.6%	NONE
Color Grade	2.89 CARATS	Medium (Faceted)	None
Clarity Grade	2.89 CARATS		
Cut Grade	2.89 CARATS		
Table	2.89 CARATS		
Depth	2.89 CARATS		
Girdle	2.89 CARATS		
Culet	2.89 CARATS		
Polish	2.89 CARATS		
Symmetry	2.89 CARATS		
Fluorescence	2.89 CARATS		
Inscriptions(s)	2.89 CARATS		

Comments: This Laboratory Grown Diamond was created by Chemical Vapor Deposition (CVD) growth process. Type IIa