



ELECTRONIC COPY

Report verification at igi.org

LABORATORY GROWN DIAMOND REPORT

September 30, 2025  
 IGI Report Number  
 Description **LABORATORY GROWN DIAMOND**  
 Shape and Cutting Style **CUT CORNERED RECTANGULAR MODIFIED BRILLIANT**  
 Measurements **10.93 X 8.17 X 5.23 MM**

**GRADING RESULTS**

Carat Weight **4.01 CARATS**  
 Color Grade **FANCY INTENSE ORANGY PINK**  
 Clarity Grade **VS 1**

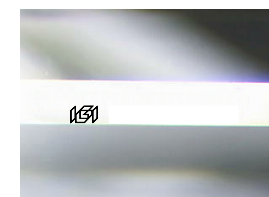
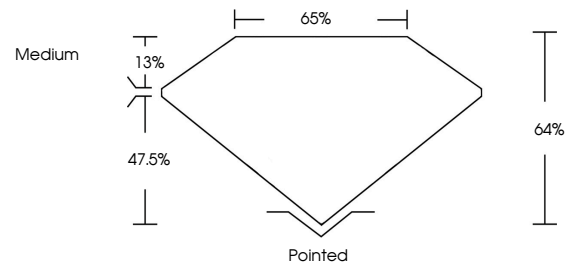
ADDITIONAL GRADING INFORMATION

Polish **EXCELLENT**  
 Symmetry **EXCELLENT**  
 Fluorescence **STRONG**

Inscription(s)

Comments: This Laboratory Grown Diamond was created by Chemical Vapor Deposition (CVD) growth process.  
 Indications of post-growth treatment.

PROPORTIONS



Sample Image Used

COLOR

D	E	F	G	H	I	J	Faint	Very Light	Light
---	---	---	---	---	---	---	-------	------------	-------

CLARITY

IF	VS <sup>1-2</sup>	VS <sup>1-2</sup>	SI <sup>1-2</sup>	I <sup>1-3</sup>
Internally Flawless	Very Very Slightly Included	Very Slightly Included	Slightly Included	Included

September 30, 2025  
 IGI Report Number  
 Description **LABORATORY GROWN DIAMOND**  
 Shape and Cutting Style **CUT CORNERED RECTANGULAR MODIFIED BRILLIANT**  
 Measurements **10.93 X 8.17 X 5.23 MM**

**GRADING RESULTS**

Carat Weight **4.01 CARATS**  
 Color Grade **FANCY INTENSE ORANGY PINK**  
 Clarity Grade **VS 1**

ADDITIONAL GRADING INFORMATION

Polish **EXCELLENT**  
 Symmetry **EXCELLENT**  
 Fluorescence **STRONG**

Inscription(s)

Comments: This Laboratory Grown Diamond was created by Chemical Vapor Deposition (CVD) growth process.  
 Indications of post-growth treatment.



IGI



September 30, 2025  
 IGI Report No  
**CUT CORNERED RECT. MODIFIED BRILLIANT**  
**10.93 X 8.17 X 5.23 MM**  
**4.01 CARATS**  
**FANCY INTENSE ORANGY PINK**  
**VS 1**  
**64%**  
**65%**  
**Medium**  
**Pointed**  
**EXCELLENT**  
**EXCELLENT**  
**STRONG**

Comments: This Laboratory Grown Diamond was created by Chemical Vapor Deposition (CVD) growth process.  
 Indications of post-growth treatment.