



ELECTRONIC COPY

Report verification at igi.org

LABORATORY GROWN DIAMOND REPORT

January 31, 2026
 IGI Report Number
 Description **LABORATORY GROWN DIAMOND**
 Shape and Cutting Style **OVAL BRILLIANT**
 Measurements **10.31 X 7.03 X 4.45 MM**
GRADING RESULTS
 Carat Weight **2.09 CARATS**
 Color Grade **F**
 Clarity Grade **VVS 2**

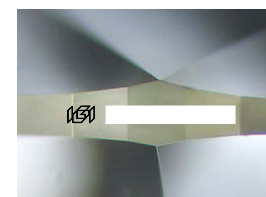
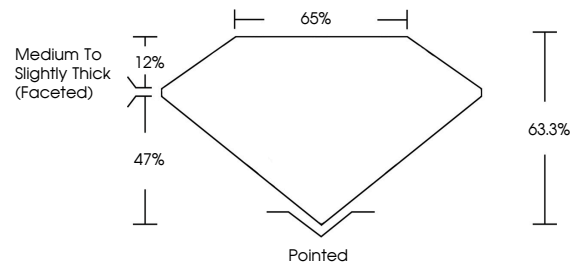
ADDITIONAL GRADING INFORMATION

Polish **VERY GOOD**
 Symmetry **VERY GOOD**
 Fluorescence **NONE**

Inscription(s)

Comments: This Laboratory Grown Diamond was created by Chemical Vapor Deposition (CVD) growth process.
 Type IIa

PROPORTIONS



Sample Image Used

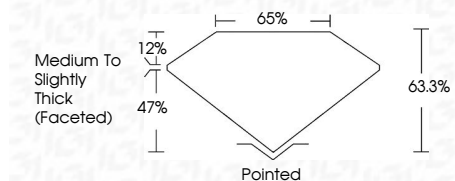
COLOR

D E F G H I J Faint Very Light Light

CLARITY

FL	IF	VVS ¹⁻²	VS ¹⁻²	SI ¹⁻²	I ¹⁻³
Flawless	Internally Flawless	Very Very Slightly Included	Very Slightly Included	Slightly Included	Included

January 31, 2026
 IGI Report Number
 Description **LABORATORY GROWN DIAMOND**
 Shape and Cutting Style **OVAL BRILLIANT**
 Measurements **10.31 X 7.03 X 4.45 MM**
GRADING RESULTS
 Carat Weight **2.09 CARATS**
 Color Grade **F**
 Clarity Grade **VVS 2**



ADDITIONAL GRADING INFORMATION

Polish **VERY GOOD**
 Symmetry **VERY GOOD**
 Fluorescence **NONE**

Inscription(s)

Comments: This Laboratory Grown Diamond was created by Chemical Vapor Deposition (CVD) growth process.
 Type IIa



January 31, 2026
 IGI Report No
OVAL BRILLIANT
 10.31 X 7.03 X 4.45 MM
 Carat Weight **2.09 CARATS**
 Color Grade **F**
 Clarity Grade **VVS 2**
 Table **65%**
 Girdle **Medium to Slightly Thick (Faceted)**
 Culet **Pointed**
 Polish **VERY GOOD**
 Symmetry **VERY GOOD**
 Fluorescence **NONE**
 Inscription(s)

Comments: This Laboratory Grown Diamond was created by Chemical Vapor Deposition (CVD) growth process.
 Type IIa