



**ELECTRONIC COPY**

Report verification at [igi.org](http://igi.org)



May 7, 2026

IGI Report Number

Description **LABORATORY GROWN DIAMOND**

Shape and Cutting Style **PEAR MODIFIED BRILLIANT**

Measurements **11.29 X 6.17 X 4.03 MM**

**GRADING RESULTS**

Carat Weight **2.01 CARATS**

Color Grade **FANCY INTENSE BROWNISH PINK**

Clarity Grade **VS 1**

May 7, 2026

IGI Report Number

Description **LABORATORY GROWN DIAMOND**

Shape and Cutting Style **PEAR MODIFIED BRILLIANT**

Measurements **11.29 X 6.17 X 4.03 MM**

**GRADING RESULTS**

Carat Weight **2.01 CARATS**

Color Grade **FANCY INTENSE BROWNISH PINK**

Clarity Grade **VS 1**

**ADDITIONAL GRADING INFORMATION**

Polish **EXCELLENT**

Symmetry **EXCELLENT**

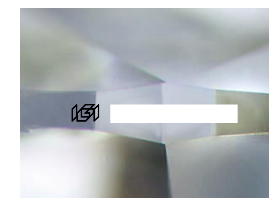
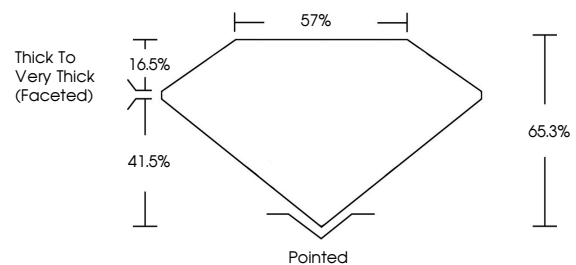
Fluorescence **STRONG**

Inscription(s)

Comments: This Laboratory Grown Diamond was created by Chemical Vapor Deposition (CVD) growth process.

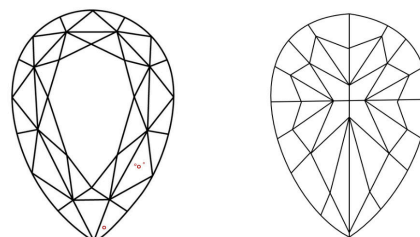
Indications of post-growth treatment.

**PROPORTIONS**



Sample Image Used

**CLARITY CHARACTERISTICS**



**KEY TO SYMBOLS**

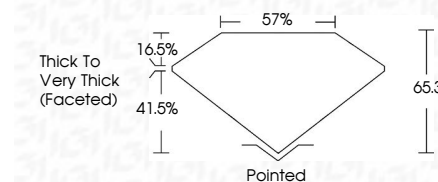
Red symbols indicate internal characteristics.  
Green symbols indicate external characteristics.

**COLOR**

D E F G H I J Faint Very Light Light

**CLARITY**

FL	IF	VS <sup>1-2</sup>	VS <sup>1-2</sup>	SI <sup>1-2</sup>	I <sup>1-3</sup>
Flawless	Internally Flawless	Very Very Slightly Included	Very Slightly Included	Slightly Included	Included



**ADDITIONAL GRADING INFORMATION**

Polish **EXCELLENT**

Symmetry **EXCELLENT**

Fluorescence **STRONG**

Inscription(s)

Comments: This Laboratory Grown Diamond was created by Chemical Vapor Deposition (CVD) growth process. Indications of post-growth treatment.



**IGI**



May 7, 2026  
IGI Report No **PEAR MODIFIED BRILLIANT**  
11.29 X 6.17 X 4.03 MM  
2.01 CARATS  
Color Grade **FANCY INTENSE BROWNISH PINK**  
Clarity Grade **VS 1**  
Depth **41.5%**  
Table **16.5%**  
Girdle **57%**  
Thick to Very Thick (Faceted)  
Culet **Pointed**  
Polish **EXCELLENT**  
Symmetry **EXCELLENT**  
Fluorescence **STRONG**  
Inscription(s)

Comments: This Laboratory Grown Diamond was created by Chemical Vapor Deposition (CVD) growth process. Indications of post-growth treatment.