



INTERNATIONAL GEMOLOGICAL INSTITUTE

ELECTRONIC COPY

LABORATORY GROWN DIAMOND REPORT

August 26, 2025

IGI Report Number

Description

Shape and Cutting Style

Measurements

LABORATORY GROWN DIAMOND

ROUND BRILLIANT

5.79 - 5.82 X 3.56 MM

GRADING RESULTS

Carat Weight

0.72 CARAT

Color Grade

F

Clarity Grade

VVS 2

Cut Grade

IDEAL

ADDITIONAL GRADING INFORMATION

Polish

VERY GOOD

Symmetry

EXCELLENT

Fluorescence

NONE

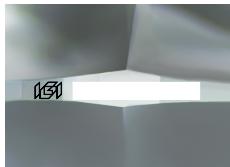
Inscription(s)

IGI

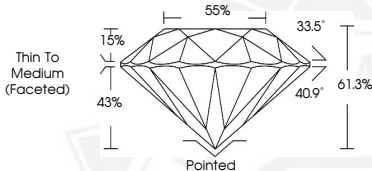
Comments: As Grown - No indication of post-growth treatment.

This Laboratory Grown Diamond was created by High Pressure High Temperature (HPHT) growth process.

Type II



Sample Image Used



August 26, 2025

IGI Report Number

ROUND BRILLIANT

LABORATORY GROWN DIAMOND

5.79 - 5.82 X 3.56 MM

Carat Weight

0.72 CARAT

Color Grade

F

Clarity Grade

VVS 2

Cut Grade

IDEAL

Polish

VERY GOOD

Symmetry

EXCELLENT

Fluorescence

NONE

Inscription(s)

IGI

Comments: As Grown - No indication of post-growth treatment. This Laboratory Grown Diamond was created by High Pressure High Temperature (HPHT) growth process. Type II

August 26, 2025

IGI Report Number

ROUND BRILLIANT

LABORATORY GROWN DIAMOND

5.79 - 5.82 X 3.56 MM

Carat Weight

0.72 CARAT

Color Grade

F

Clarity Grade

VVS 2

Cut Grade

IDEAL

Polish

VERY GOOD

Symmetry

EXCELLENT

Fluorescence

NONE

Inscription(s)

IGI

Comments: As Grown - No indication of post-growth treatment. This Laboratory Grown Diamond was created by High Pressure High Temperature (HPHT) growth process. Type II



THIS DOCUMENT WAS PRODUCED WITH THE FOLLOWING SECURITY MEASURES: SPECIAL DOCUMENT PAPER, INK SCREENS, WATERMARK, BACKGROUND DESIGNS, HOLOGRAM AND OTHER SECURITY FEATURES NOT LISTED AND DO EXCEED DOCUMENT SECURITY INDUSTRY GUIDELINES.

For terms & conditions and to verify this report, please visit www.igi.org