



**ELECTRONIC COPY**

Report verification at [igi.org](http://igi.org)



September 30, 2024

IGI Report Number

Description **LABORATORY GROWN DIAMOND**

Shape and Cutting Style **CUSHION MIXED CUT**

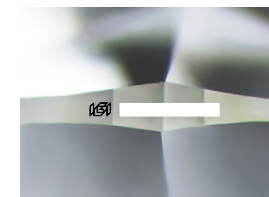
Measurements **10.52 X 7.89 X 5.58 MM**

**GRADING RESULTS**

Carat Weight **5.02 CARATS**

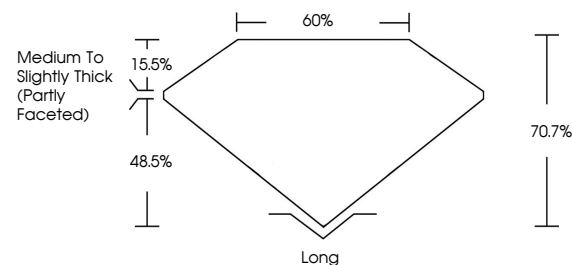
Color Grade **D**

Clarity Grade **VS 1**

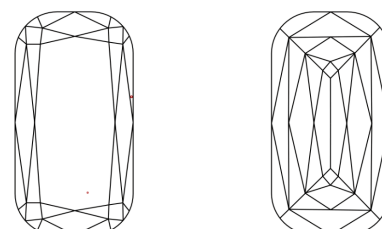


Sample Image Used

**PROPORTIONS**



**CLARITY CHARACTERISTICS**



**KEY TO SYMBOLS**

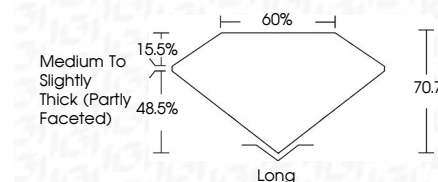
Red symbols indicate internal characteristics.  
Green symbols indicate external characteristics.

**COLOR**

D E F G H I J Faint Very Light Light

**CLARITY**

IF	VS <sup>1-2</sup>	VS <sup>1-2</sup>	SI <sup>1-2</sup>	I <sup>1-3</sup>
Internally Flawless	Very Very Slightly Included	Very Slightly Included	Slightly Included	Included



**ADDITIONAL GRADING INFORMATION**

Polish **EXCELLENT**

Symmetry **EXCELLENT**

Fluorescence **NONE**

Inscription(s)

Comments: This Laboratory Grown Diamond was created by Chemical Vapor Deposition (CVD) growth process.  
Type IIa



**IGI**

September 30, 2024  
IGI Report No  
**CUSHION MIXED CUT**  
10.52 X 7.89 X 5.58 MM  
5.02 CARATS  
D  
VS 1  
70.7%  
48.5%  
Medium to Slightly Thick (Partly Faceted)  
Long  
EXCELLENT  
EXCELLENT  
NONE

Comments: This Laboratory Grown Diamond was created by Chemical Vapor Deposition (CVD) growth process.  
Type IIa