



ELECTRONIC COPY

Report verification at igi.org



April 4, 2026

IGI Report Number

Description LABORATORY GROWN DIAMOND

Shape and Cutting Style ROUND BRILLIANT

Measurements 8.09 - 8.12 X 5.02 MM

GRADING RESULTS

Carat Weight 2.02 CARATS

Color Grade D

Clarity Grade VS 2

Cut Grade IDEAL

April 4, 2026

IGI Report Number

Description LABORATORY GROWN DIAMOND

Shape and Cutting Style ROUND BRILLIANT

Measurements 8.09 - 8.12 X 5.02 MM

GRADING RESULTS

Carat Weight 2.02 CARATS

Color Grade D

Clarity Grade VS 2

Cut Grade IDEAL

ADDITIONAL GRADING INFORMATION

Polish EXCELLENT

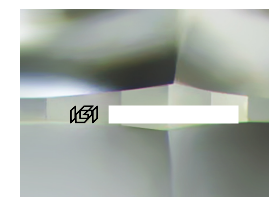
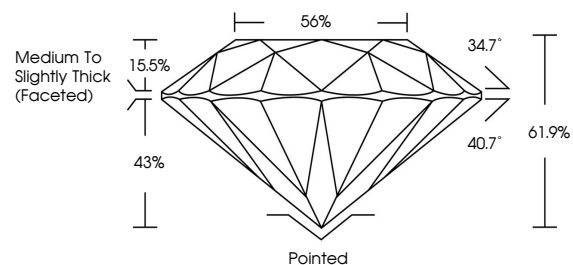
Symmetry EXCELLENT

Fluorescence NONE

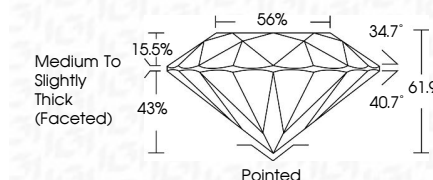
Inscription(s) IGI

Comments: This Laboratory Grown Diamond was created by Chemical Vapor Deposition (CVD) growth process. Type IIa

PROPORTIONS



Sample Image Used



COLOR

D E F G H I J Faint Very Light Light

CLARITY

FL IF VS 1-2 VS 1-2 SI 1-2 I 1-3
Flawless Internally Flawless Very Very Slightly Included Very Slightly Included Slightly Included Included

ADDITIONAL GRADING INFORMATION

Polish EXCELLENT

Symmetry EXCELLENT

Fluorescence NONE

Inscription(s) IGI

Comments: This Laboratory Grown Diamond was created by Chemical Vapor Deposition (CVD) growth process. Type IIa



IGI



Summary table with fields: April 4, 2026, IGI Report No, ROUND BRILLIANT, 8.09 - 8.12 X 5.02 MM, 2.02 CARATS, D, VS 2, IDEAL, 61.9%, 56%, Medium To Slightly Thick (Faceted), Pointed, EXCELLENT, EXCELLENT, NONE, IGI, Comments: This Laboratory Grown Diamond was created by Chemical Vapor Deposition (CVD) growth process. Type IIa