



ELECTRONIC COPY

Report verification at igi.org

LABORATORY GROWN DIAMOND REPORT

March 7, 2025
IGI Report Number
Description LABORATORY GROWN DIAMOND
Shape and Cutting Style MODIFIED RECTANGULAR CUSHION STEP CUT
Measurements 10.87 X 7.32 X 4.68 MM

GRADING RESULTS

Carat Weight 4.03 CARATS
Color Grade D
Clarity Grade VVS 1

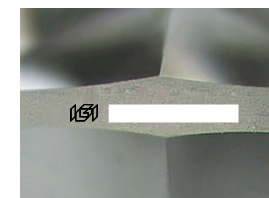
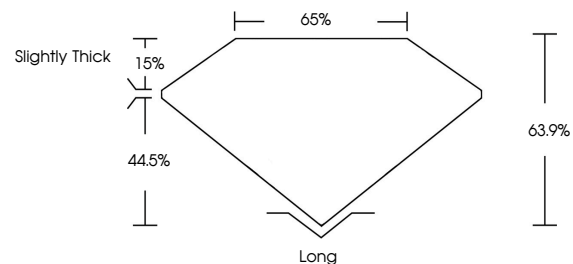
ADDITIONAL GRADING INFORMATION

Polish EXCELLENT
Symmetry EXCELLENT
Fluorescence NONE

Inscription(s) IGI

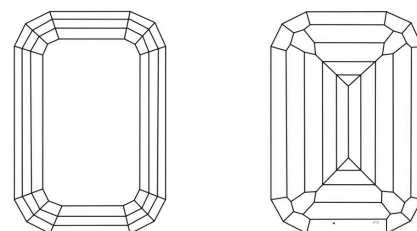
Comments: This Laboratory Grown Diamond was created by Chemical Vapor Deposition (CVD) growth process. Type IIa

PROPORTIONS



Sample Image Used

CLARITY CHARACTERISTICS



KEY TO SYMBOLS

Red symbols indicate internal characteristics. Green symbols indicate external characteristics.

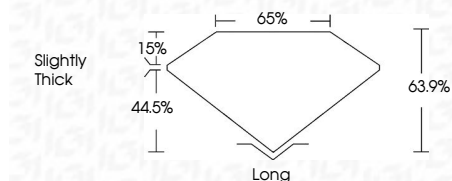
COLOR

D E F G H I J Faint Very Light Light

CLARITY

IF VS 1-2 VS 1-2 SI 1-2 I 1-3
Internally Flawless Very Very Slightly Included Very Slightly Included Slightly Included Included

March 7, 2025
IGI Report Number
Description LABORATORY GROWN DIAMOND
Shape and Cutting Style MODIFIED RECTANGULAR CUSHION STEP CUT
Measurements 10.87 X 7.32 X 4.68 MM
GRADING RESULTS
Carat Weight 4.03 CARATS
Color Grade D
Clarity Grade VVS 1



ADDITIONAL GRADING INFORMATION

Polish EXCELLENT
Symmetry EXCELLENT
Fluorescence NONE

Inscription(s) IGI
Comments: This Laboratory Grown Diamond was created by Chemical Vapor Deposition (CVD) growth process. Type IIa



March 7, 2025
IGI Report No. MODIFIED RECTANGULAR CUSHION STEP CUT
10.87 X 7.32 X 4.68 MM
4.03 CARATS
D
VVS 1
63.9%
65%
Slightly Thick
Long
EXCELLENT
EXCELLENT
NONE
IGI
Comments: This Laboratory Grown Diamond was created by Chemical Vapor Deposition (CVD) growth process. Type IIa