

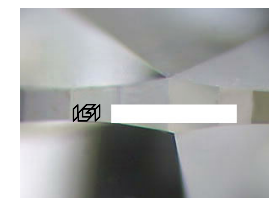
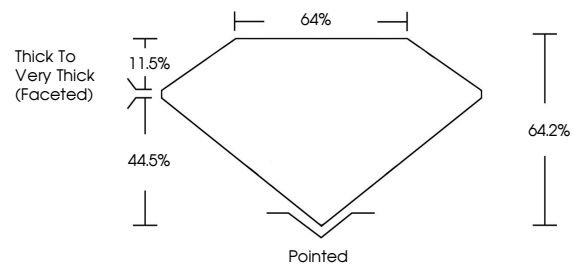


**ELECTRONIC COPY**

Report verification at [igi.org](http://igi.org)

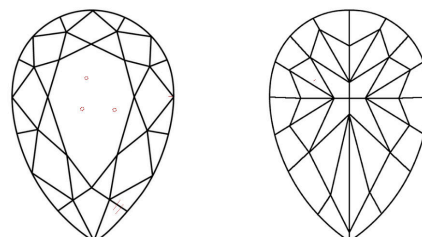
**LABORATORY GROWN DIAMOND REPORT**

**PROPORTIONS**



Sample Image Used

**CLARITY CHARACTERISTICS**



**KEY TO SYMBOLS**

Red symbols indicate internal characteristics.  
Green symbols indicate external characteristics.

**COLOR**

D E F G H I J Faint Very Light Light

**CLARITY**

FL	IF	VS <sup>1-2</sup>	VS <sup>1-2</sup>	SI <sup>1-2</sup>	I <sup>1-3</sup>
Flawless	Internally Flawless	Very Very Slightly Included	Very Slightly Included	Slightly Included	Included

February 6, 2026

IGI Report Number

Description **LABORATORY GROWN DIAMOND**

Shape and Cutting Style **PEAR MODIFIED BRILLIANT**

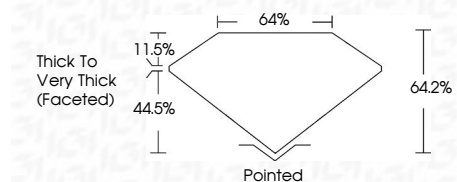
Measurements **9.70 X 5.89 X 3.78 MM**

**GRADING RESULTS**

Carat Weight **1.57 CARAT**

Color Grade **FANCY INTENSE BROWNISH PINK**

Clarity Grade **VS 2**



**ADDITIONAL GRADING INFORMATION**

Polish **EXCELLENT**

Symmetry **EXCELLENT**

Fluorescence **SLIGHT**

Inscription(s)

Comments: This Laboratory Grown Diamond was created by Chemical Vapor Deposition (CVD) growth process. Indications of post-growth treatment.



February 6, 2026

IGI Report Number

Description **LABORATORY GROWN DIAMOND**

Shape and Cutting Style **PEAR MODIFIED BRILLIANT**

Measurements **9.70 X 5.89 X 3.78 MM**

**GRADING RESULTS**

Carat Weight **1.57 CARAT**

Color Grade **FANCY INTENSE BROWNISH PINK**

Clarity Grade **VS 2**

**ADDITIONAL GRADING INFORMATION**

Polish **EXCELLENT**

Symmetry **EXCELLENT**

Fluorescence **SLIGHT**

Inscription(s)

Comments: This Laboratory Grown Diamond was created by Chemical Vapor Deposition (CVD) growth process. Indications of post-growth treatment.

February 6, 2026	IGI Report No	PEAR MODIFIED BRILLIANT
1.57 CARAT	Carat Weight	9.70 X 5.89 X 3.78 MM
FANCY INTENSE BROWNISH PINK	Color Grade	VS 2
64.2%	Table	64%
11.5%	Crown	44.5%
64.2%	Depth	Pointed
EXCELLENT	Polish	EXCELLENT
EXCELLENT	Symmetry	EXCELLENT
SLIGHT	Fluorescence	SLIGHT
	Inscription(s)	

Comments: This Laboratory Grown Diamond was created by Chemical Vapor Deposition (CVD) growth process. Indications of post-growth treatment.