



LABORATORY GROWN DIAMOND REPORT

August 4, 2025

IGI Report Number

Description

LABORATORY GROWN DIAMOND

Shape and Cutting Style

HEART BRILLIANT

Measurements

3.08 X 3.27 X 1.66 MM

GRADING RESULTS

Carat Weight

0.12 CARAT

Color Grade

FANCY VIVID BLUE

Clarity Grade

VS 1

ADDITIONAL GRADING INFORMATION

Polish

EXCELLENT

Symmetry

VERY GOOD

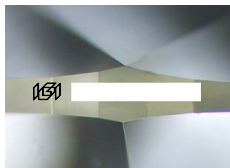
Fluorescence

NONE

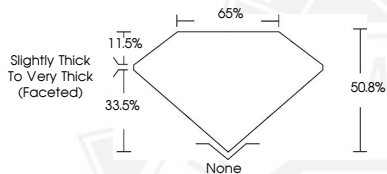
Inscription(s)



Comments: This Laboratory Grown Diamond was created by Chemical Vapor Deposition (CVD) growth process. Indications of post-growth treatment.



Sample Image Used



August 4, 2025

IGI Report Number

HEART BRILLIANT

LABORATORY GROWN DIAMOND

3.08 X 3.27 X 1.66 MM

Carat Weight **0.12 CARAT**

Color Grade **FANCY VIVID BLUE**

Clarity Grade **VS 1**

Polish **EXCELLENT**

Symmetry **VERY GOOD**

Fluorescence **NONE**

Inscription(s)

Comments: This Laboratory Grown Diamond was created by Chemical Vapor Deposition (CVD) growth process. Indications of post-growth treatment.



August 4, 2025

IGI Report Number

HEART BRILLIANT

LABORATORY GROWN DIAMOND

3.08 X 3.27 X 1.66 MM

Carat Weight **0.12 CARAT**

Color Grade **FANCY VIVID BLUE**

Clarity Grade **VS 1**

Polish **EXCELLENT**

Symmetry **VERY GOOD**

Fluorescence **NONE**

Inscription(s)

Comments: This Laboratory Grown Diamond was created by Chemical Vapor Deposition (CVD) growth process. Indications of post-growth treatment.



THIS DOCUMENT WAS PRODUCED WITH THE FOLLOWING SECURITY MEASURES: SPECIAL DOCUMENT PAPER, INK SCREENS, WATERMARK, BACKGROUND DESIGNS, HOLOGRAM AND OTHER SECURITY FEATURES NOT LISTED AND DO EXCEED DOCUMENT SECURITY INDUSTRY GUIDELINES.