



INTERNATIONAL GEMOLOGICAL INSTITUTE

LABORATORY GROWN DIAMOND REPORT

June 4, 2024

IGI Report Number

Description **LABORATORY GROWN DIAMOND**

Shape and Cutting Style **OVAL BRILLIANT**

Measurements **7.72 X 5.71 X 3.46 MM**

GRADING RESULTS

Carat Weight **0.97 CARAT**

Color Grade **H**

Clarity Grade **VVS 2**

ADDITIONAL GRADING INFORMATION

Polish **EXCELLENT**

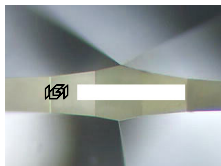
Symmetry **EXCELLENT**

Fluorescence **NONE**

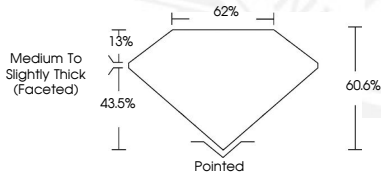
Inscription(s) 

Comments: This Laboratory Grown Diamond was created by Chemical Vapor Deposition (CVD) growth process.
Type IIa

ELECTRONIC COPY



Sample Image Used



June 4, 2024

IGI Report Number

OVAL BRILLIANT

LABORATORY GROWN DIAMOND

7.72 X 5.71 X 3.46 MM

Carat Weight **0.97 CARAT**


Color Grade **H**

Clarity Grade **VVS 2**

Polish **EXCELLENT**

Symmetry **EXCELLENT**

Fluorescence **NONE**

Inscription(s) 

Comments: This Laboratory Grown Diamond was created by Chemical Vapor Deposition (CVD) growth process. Type IIa

June 4, 2024

IGI Report Number

OVAL BRILLIANT

LABORATORY GROWN DIAMOND

7.72 X 5.71 X 3.46 MM

Carat Weight **0.97 CARAT**

Color Grade **H**

Clarity Grade **VVS 2**

Polish **EXCELLENT**

Symmetry **EXCELLENT**

Fluorescence **NONE**

Inscription(s) 

Comments: This Laboratory Grown Diamond was created by Chemical Vapor Deposition (CVD) growth process. Type IIa



THIS DOCUMENT WAS PRODUCED WITH THE FOLLOWING SECURITY MEASURES: SPECIAL DOCUMENT PAPER, INK SCREENS, WATERMARK, BACKGROUND DESIGNS, HOLOGRAM AND OTHER SECURITY FEATURES NOT LISTED AND DO EXCEED DOCUMENT SECURITY INDUSTRY GUIDELINES.

For terms & conditions and to verify this report, please visit www.igi.org