



ELECTRONIC COPY

Report verification at igi.org

LABORATORY GROWN DIAMOND REPORT

October 29, 2025
 IGI Report Number
 Description **LABORATORY GROWN DIAMOND**
 Shape and Cutting Style **OVAL BRILLIANT**
 Measurements **12.32 X 8.32 X 5.22 MM**
GRADING RESULTS
 Carat Weight **3.31 CARATS**
 Color Grade **E**
 Clarity Grade **VVS 2**

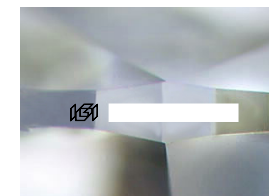
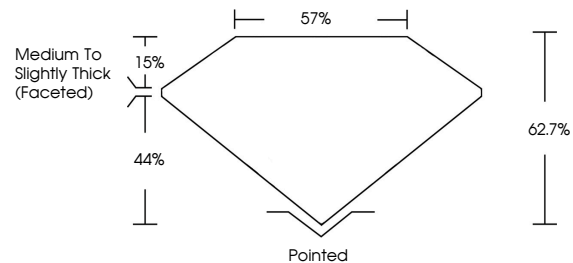
ADDITIONAL GRADING INFORMATION

Polish **EXCELLENT**
 Symmetry **EXCELLENT**
 Fluorescence **NONE**

Inscription(s)

Comments: This Laboratory Grown Diamond was created by Chemical Vapor Deposition (CVD) growth process.
 Type IIa

PROPORTIONS



Sample Image Used

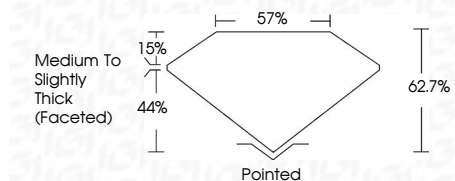
COLOR

D E F G H I J Faint Very Light Light

CLARITY

FL	IF	VVS ¹⁻²	VS ¹⁻²	SI ¹⁻²	I ¹⁻³
Flawless	Internally Flawless	Very Very Slightly Included	Very Slightly Included	Slightly Included	Included

October 29, 2025
 IGI Report Number
 Description **LABORATORY GROWN DIAMOND**
 Shape and Cutting Style **OVAL BRILLIANT**
 Measurements **12.32 X 8.32 X 5.22 MM**
GRADING RESULTS
 Carat Weight **3.31 CARATS**
 Color Grade **E**
 Clarity Grade **VVS 2**



ADDITIONAL GRADING INFORMATION

Polish **EXCELLENT**
 Symmetry **EXCELLENT**
 Fluorescence **NONE**

Inscription(s)

Comments: This Laboratory Grown Diamond was created by Chemical Vapor Deposition (CVD) growth process.
 Type IIa



October 29, 2025
 IGI Report No
OVAL BRILLIANT
 12.32 X 8.32 X 5.22 MM
 Carat Weight **3.31 CARATS**
 Color Grade **E**
 Clarity Grade **VVS 2**
 Table **62.7%**
 Girdle **57%**
 Medium to Slightly Thick (Faceted)
 Culet **Pointed**
 Polish **EXCELLENT**
 Symmetry **EXCELLENT**
 Fluorescence **NONE**
 Inscription(s)

Comments: This Laboratory Grown Diamond was created by Chemical Vapor Deposition (CVD) growth process.
 Type IIa