



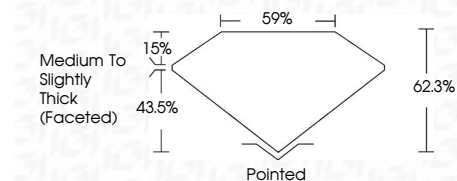
ELECTRONIC COPY

Report verification at igi.org



April 27, 2026
IGI Report Number
Description LABORATORY GROWN DIAMOND
Shape and Cutting Style OVAL BRILLIANT
Measurements 11.71 X 8.11 X 5.05 MM

GRADING RESULTS
Carat Weight 3.07 CARATS
Color Grade F
Clarity Grade VVS 2



ADDITIONAL GRADING INFORMATION
Polish EXCELLENT
Symmetry EXCELLENT
Fluorescence NONE
Inscription(s) IGI
Comments: This Laboratory Grown Diamond was created by Chemical Vapor Deposition (CVD) growth process. Type IIa



April 27, 2026
IGI Report No OVAL BRILLIANT
11.71 X 8.11 X 5.05 MM
3.07 CARATS
F
VVS 2
62.3%
59%
Medium to Slightly Thick (Faceted)
Pointed
EXCELLENT
EXCELLENT
NONE
IGI
Comments: This Laboratory Grown Diamond was created by Chemical Vapor Deposition (CVD) growth process. Type IIa

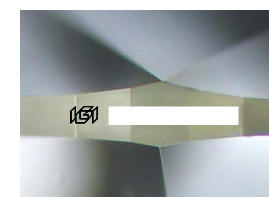
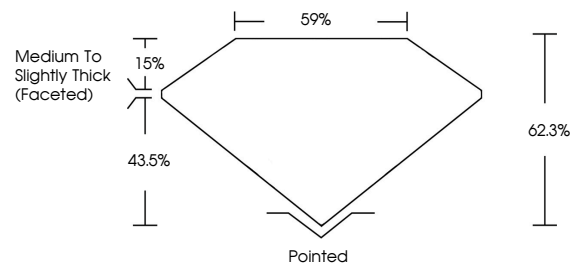
April 27, 2026
IGI Report Number
Description LABORATORY GROWN DIAMOND
Shape and Cutting Style OVAL BRILLIANT
Measurements 11.71 X 8.11 X 5.05 MM

GRADING RESULTS
Carat Weight 3.07 CARATS
Color Grade F
Clarity Grade VVS 2

ADDITIONAL GRADING INFORMATION
Polish EXCELLENT
Symmetry EXCELLENT
Fluorescence NONE

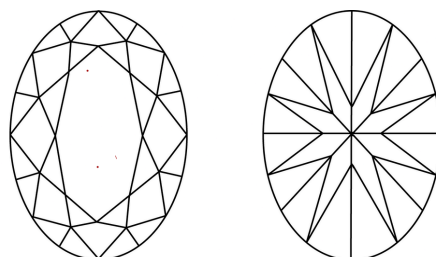
Inscription(s) IGI
Comments: This Laboratory Grown Diamond was created by Chemical Vapor Deposition (CVD) growth process. Type IIa

PROPORTIONS



Sample Image Used

CLARITY CHARACTERISTICS



KEY TO SYMBOLS

Red symbols indicate internal characteristics.
Green symbols indicate external characteristics.

COLOR

D E F G H I J Faint Very Light Light

CLARITY

FL IF VVS 1-2 VS 1-2 SI 1-2 I 1-3
Flawless Internally Flawless Very Very Slightly Included Very Slightly Included Slightly Included Included

