

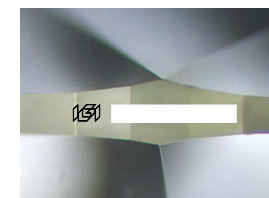
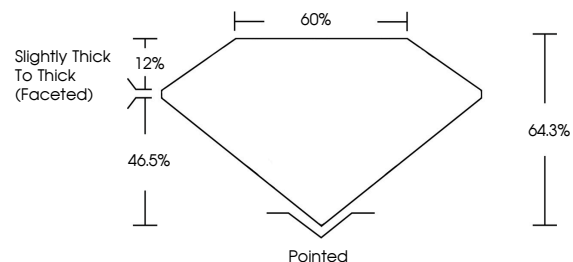


ELECTRONIC COPY

Report verification at igi.org

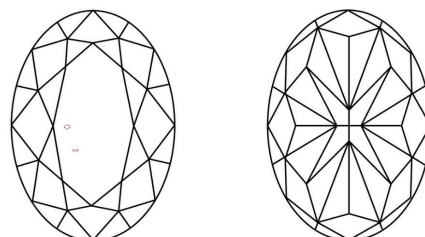
LABORATORY GROWN DIAMOND REPORT

PROPORTIONS



Sample Image Used

CLARITY CHARACTERISTICS



KEY TO SYMBOLS

Red symbols indicate internal characteristics.
Green symbols indicate external characteristics.

COLOR

D E F G H I J Faint Very Light Light

CLARITY

IF	VS ¹⁻²	VS ¹⁻²	SI ¹⁻²	I ¹⁻³
Internally Flawless	Very Very Slightly Included	Very Slightly Included	Slightly Included	Included

September 9, 2025

IGI Report Number

Description **LABORATORY GROWN DIAMOND**

Shape and Cutting Style **OVAL MODIFIED BRILLIANT**

Measurements **10.74 X 7.33 X 4.71 MM**

GRADING RESULTS

Carat Weight **3.09 CARATS**

Color Grade **FANCY VIVID BLUE**

Clarity Grade **VVS 2**

September 9, 2025

IGI Report Number

Description **LABORATORY GROWN DIAMOND**

Shape and Cutting Style **OVAL MODIFIED BRILLIANT**

Measurements **10.74 X 7.33 X 4.71 MM**

GRADING RESULTS

Carat Weight **3.09 CARATS**

Color Grade **FANCY VIVID BLUE**

Clarity Grade **VVS 2**

ADDITIONAL GRADING INFORMATION

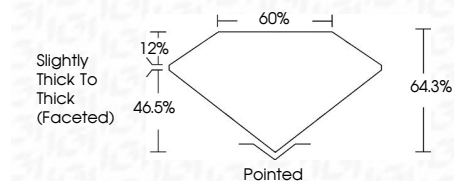
Polish **EXCELLENT**

Symmetry **EXCELLENT**

Fluorescence **NONE**

Inscription(s)

Comments: This Laboratory Grown Diamond was created by Chemical Vapor Deposition (CVD) growth process. Indications of post-growth treatment.



ADDITIONAL GRADING INFORMATION

Polish **EXCELLENT**

Symmetry **EXCELLENT**

Fluorescence **NONE**

Inscription(s)

Comments: This Laboratory Grown Diamond was created by Chemical Vapor Deposition (CVD) growth process. Indications of post-growth treatment.



© IGI 2020, International Gemological Institute

FD - 10 20

September 9, 2025	IGI Report No	10.74 X 7.33 X 4.71 MM	3.09 CARATS	FANCY VIVID BLUE	VVS 2	64.3%	12%	Slightly Thick To Thick (Faceted)	Pointed	EXCELLENT	EXCELLENT	NONE	
			Carat Weight	Color Grade	Clarity Grade	Table	Depth	Grailes	Culet	Polish	Symmetry	Fluorescence	Inscription(s)

Comments: This Laboratory Grown Diamond was created by Chemical Vapor Deposition (CVD) growth process. Indications of post-growth treatment.