

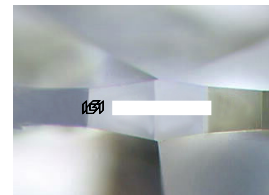
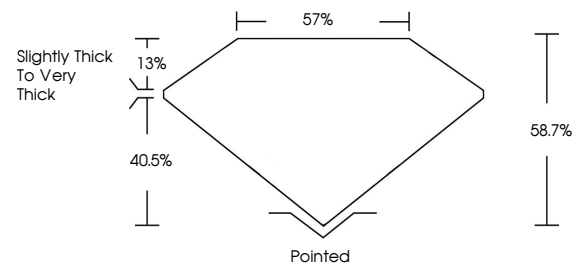


**ELECTRONIC COPY**

## LABORATORY GROWN DIAMOND REPORT

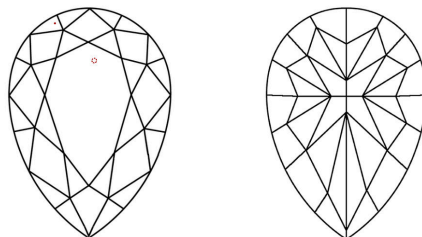
Report verification at [igi.org](http://igi.org)

## PROPORTIONS



Sample Image Used

## CLARITY CHARACTERISTICS



### KEY TO SYMBOLS

Red symbols indicate internal characteristics.  
Green symbols indicate external characteristics.

## COLOR

D E F G H I J Faint Very Light Light

## CLARITY

IF	VVS <sup>1-2</sup>	VS <sup>1-2</sup>	SI <sup>1-2</sup>	I <sup>1-3</sup>
Internally Flawless	Very Very Slightly Included	Very Slightly Included	Slightly Included	Included



© IGI 2020, International Gemological Institute

FD - 10 20

THIS DOCUMENT WAS PRODUCED WITH THE FOLLOWING SECURITY MEASURES: SPECIAL DOCUMENT PAPER, INK SCREENS, WATERMARK BACKGROUND DESIGNS, HOLOGRAM AND OTHER SECURITY FEATURES NOT LISTED AND DO EXCEED DOCUMENT SECURITY INDUSTRY GUIDELINES.

## DIAMOND REPORT

May 24, 2024

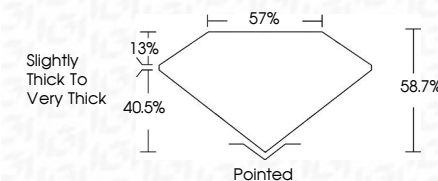
IGI Report Number

Description **LABORATORY GROWN DIAMOND**Shape and Cutting Style **PEAR MODIFIED BRILLIANT**

Measurements 8.79 X 5.43 X 3.19 MM

## GRADING RESULTS

Carat Weight 1.08 CARAT

Color Grade **FANCY BLUE**Clarity Grade WS 2

### ADDITIONAL GRADING INFORMATION

Polish VERY GOOD

Symmetry **VERY GOOD**Fluorescence **NONE**

Inscription(s) 15

Comments: This Laboratory Grown Diamond was created by Chemical Vapor Deposition (CVD) growth process.

Indications of post-growth treatment.

Secondary color: Grey



<b>May 24, 2024</b>	<b>PEAR MODIFIED BRILLIANT</b>	<b>1.06 CARAT</b>	
<b>G1 Report No.</b>	<b>6.78 X 5.68 X 3.19 MM</b>	<b>FANCY BLUE</b>	
	<b>Carat Weight</b>	<b>VVS 2</b>	
	<b>Color Grade</b>	<b>58.7%</b>	
	<b>Cutty Grade</b>	<b>57%</b>	
	<b>Depth</b>	<b>Slightly Thick To Very thick</b>	
	<b>Table</b>	<b>Poished</b>	
	<b>Girdle</b>	<b>VERY GOOD</b>	
	<b>Fluorescence</b>	<b>VERY GOOD</b>	
	<b>Inscription(s)</b>	<b>NONE</b>	
		<b>fgh</b>	

**Comments:**  
This Laboratory Grown Diamond was created by Chemical Vapor Deposition (CVD) growth process.  
The diamond has been treated with treatment.  
Secondary color Gray

**Comments:**  
This Laboratory Grown Diamond was created by Chemical Vapor Deposition (CVD) growth process.  
indications of post-growth treatment.