



INTERNATIONAL
GEMOLOGICAL
INSTITUTE

DIAMOND REPORT **ELECTRONIC COPY**

July 20, 2023

IGI Report Number

Description NATURAL DIAMOND

Shape and Cutting Style PEAR BRILLIANT

Measurements 10.21 x 6.96 x 4.09 mm

GRADING RESULTS

Carat Weight 1.71 CARAT

Color Grade J

Clarity Grade VS 2

Cut Grade EXCELLENT

ADDITIONAL GRADING INFORMATION

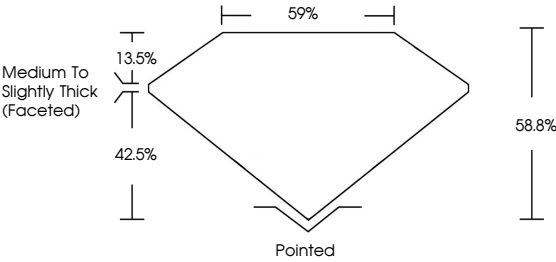
Polish EXCELLENT

Symmetry EXCELLENT

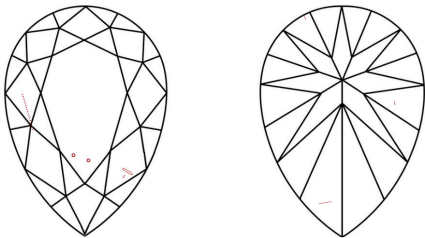
Fluorescence NONE

Inscription(s)

PROPORTIONS

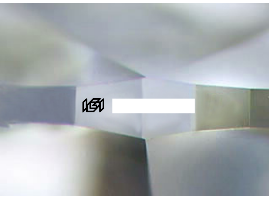


CLARITY CHARACTERISTICS



KEY TO SYMBOLS

Red symbols indicate internal characteristics.
Green symbols indicate external characteristics.



Sample Image Used

COLOR

D - F	G - J	K - M	N - R	S - Z	FANCY
Colorless	Near Colorless	Slightly Tinted	Very Light Color	Light Color	

CLARITY

IF	VS ¹⁻²	VS ¹⁻²	SI ¹⁻²	I ¹⁻³
Internally Flawless	Very Very Slightly Included	Very Slightly Included	Slightly Included	Included



DIAMOND REPORT

July 20, 2023

IGI Report Number

Description NATURAL DIAMOND

Shape and Cutting Style PEAR BRILLIANT

Measurements 10.21 x 6.96 x 4.09 mm

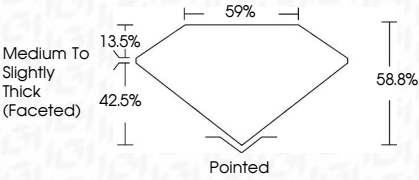
GRADING RESULTS

Carat Weight 1.71 CARAT

Color Grade J

Clarity Grade VS 2

Cut Grade EXCELLENT



ADDITIONAL GRADING INFORMATION

Polish EXCELLENT

Symmetry EXCELLENT

Fluorescence NONE

Inscription(s)



IGI

July 20, 2023

IGI Report No

NATURAL DIAMOND

PEAR BRILLIANT

10.21 x 6.96 x 4.09 mm

Carat Weight

1.71 CARAT

Color Grade

J

Clarity Grade

VS2

Cut Grade

EXCELLENT

Depth

58.8%

Table

59%

Grade

Medium To Slightly Thick (Faceted)

Cut

Pointed

Polish

EXCELLENT

Symmetry

EXCELLENT

Fluorescence

NONE

Inscription(s)