



LABORATORY GROWN DIAMOND REPORT

December 26, 2025

IGI Report Number

Description

LABORATORY GROWN DIAMOND

Shape and Cutting Style

CUSHION MIXED CUT

Measurements

5.39 X 2.29 X 1.41 MM

GRADING RESULTS

Carat Weight

0.18 CARAT

Color Grade

FANCY VIVID BLUE

Clarity Grade

VS 2

ADDITIONAL GRADING INFORMATION

Polish

VERY GOOD

Symmetry

VERY GOOD

Fluorescence

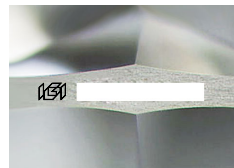
NONE

Inscription(s)

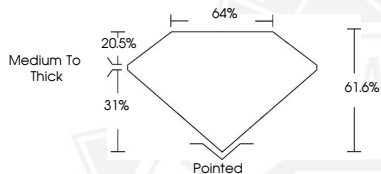


Comments: This Laboratory Grown Diamond was created by Chemical Vapor Deposition (CVD) growth process. Indications of post-growth treatment.

Secondary color: Green



Sample Image Used



December 26, 2025

IGI Report Number

CUSHION MIXED CUT

LABORATORY GROWN DIAMOND

5.39 X 2.29 X 1.41 MM

Carat Weight **0.18 CARAT**

Color Grade **FANCY VIVID BLUE**

Clarity Grade **VS 2**

Polish **VERY GOOD**

Symmetry **VERY GOOD**

Fluorescence **NONE**

Inscription(s)

Comments: This Laboratory Grown Diamond was created by Chemical Vapor Deposition (CVD) growth process. Indications of post-growth treatment. Secondary color: Green

December 26, 2025

IGI Report Number

CUSHION MIXED CUT

LABORATORY GROWN DIAMOND

5.39 X 2.29 X 1.41 MM

Carat Weight **0.18 CARAT**

Color Grade **FANCY VIVID BLUE**

Clarity Grade **VS 2**

Polish **VERY GOOD**

Symmetry **VERY GOOD**

Fluorescence **NONE**

Inscription(s)

Comments: This Laboratory Grown Diamond was created by Chemical Vapor Deposition (CVD) growth process. Indications of post-growth treatment. Secondary color: Green



THIS DOCUMENT WAS PRODUCED WITH THE FOLLOWING SECURITY MEASURES: SPECIAL DOCUMENT PAPER, INK SCREENS, WATERMARK, BACKGROUND DESIGNS, HOLOGRAM AND OTHER SECURITY FEATURES NOT LISTED AND DO EXCEED DOCUMENT SECURITY INDUSTRY GUIDELINES.