



LABORATORY GROWN DIAMOND REPORT

December 5, 2025

IGI Report Number

Description

LABORATORY GROWN DIAMOND

Shape and Cutting Style

OVAL BRILLIANT

Measurements

6.08 X 4.58 X 2.92 MM

GRADING RESULTS

Carat Weight

0.52 CARAT

Color Grade

I

Clarity Grade

VS 1

ADDITIONAL GRADING INFORMATION

Polish

VERY GOOD

Symmetry

VERY GOOD

Fluorescence

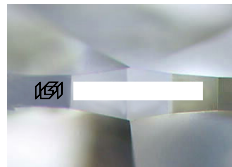
NONE

Inscription(s)

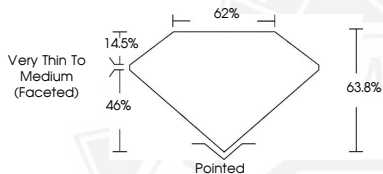


Comments: As Grown - No indication of post-growth treatment. This Laboratory Grown Diamond was created by High Pressure High Temperature (HPHT) growth process.

Type II
Light Blue



Sample Image Used



December 5, 2025

IGI Report Number

OVAL BRILLIANT

LABORATORY GROWN DIAMOND

6.08 X 4.58 X 2.92 MM

Carat Weight

0.52 CARAT

Color Grade

I

Clarity Grade

VS 1

Polish

VERY GOOD

Symmetry

VERY GOOD

Fluorescence

NONE

Inscription(s)



Comments: As Grown - No indication of post-growth treatment. This Laboratory Grown Diamond was created by High Pressure High Temperature (HPHT) growth process. Type II Light Blue

December 5, 2025

IGI Report Number

OVAL BRILLIANT

LABORATORY GROWN DIAMOND

6.08 X 4.58 X 2.92 MM

Carat Weight

0.52 CARAT

Color Grade

I

Clarity Grade

VS 1

Polish

VERY GOOD

Symmetry

VERY GOOD

Fluorescence

NONE

Inscription(s)



Comments: As Grown - No indication of post-growth treatment. This Laboratory Grown Diamond was created by High Pressure High Temperature (HPHT) growth process. Type II Light Blue



THIS DOCUMENT WAS PRODUCED WITH THE FOLLOWING SECURITY MEASURES: SPECIAL DOCUMENT PAPER, INK SCREENS, WATERMARK, BACKGROUND DESIGNS, HOLOGRAM AND OTHER SECURITY FEATURES NOT LISTED AND DO EXCEED DOCUMENT SECURITY INDUSTRY GUIDELINES.