



**INTERNATIONAL  
GEMOLOGICAL  
INSTITUTE**

**LABORATORY GROWN DIAMOND REPORT**

September 28, 2024

IGI Report Number

Description

Shape and Cutting Style

Measurements

**LABORATORY GROWN DIAMOND**

**MARQUISE BRILLIANT**

**7.35 X 3.44 X 2.15 MM**

**GRADING RESULTS**

Carat Weight

Color Grade

Clarity Grade

Cut Grade

**0.31 CARAT**

**E**

**VVS 1**

**EXCELLENT**

**ADDITIONAL GRADING INFORMATION**

Polish

Symmetry

Fluorescence

Inscription(s)

**EXCELLENT**

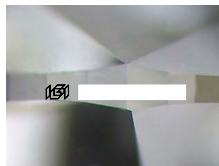
**VERY GOOD**

**NONE**

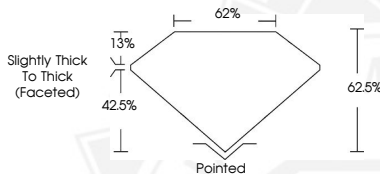


Comments: As Grown - No indication of post-growth treatment. This Laboratory Grown Diamond was created by High Pressure High Temperature (HPHT) growth process. Type II

**ELECTRONIC COPY**



Sample Image Used



September 28, 2024

IGI Report Number

**MARQUISE BRILLIANT**

**LABORATORY GROWN DIAMOND**

**7.35 X 3.44 X 2.15 MM**

Carat Weight **0.31 CARAT**

Color Grade **E**

Clarity Grade **VVS 1**

Cut Grade **EXCELLENT**

Polish **EXCELLENT**

Symmetry **VERY GOOD**

Fluorescence **NONE**

Inscription(s)

Comments: As Grown - No indication of post-growth treatment. This Laboratory Grown Diamond was created by High Pressure High Temperature (HPHT) growth process. Type II

September 28, 2024

IGI Report Number

**MARQUISE BRILLIANT**

**LABORATORY GROWN DIAMOND**

**7.35 X 3.44 X 2.15 MM**

Carat Weight **0.31 CARAT**

Color Grade **E**

Clarity Grade **VVS 1**

Cut Grade **EXCELLENT**

Polish **EXCELLENT**

Symmetry **VERY GOOD**

Fluorescence **NONE**

Inscription(s)

Comments: As Grown - No indication of post-growth treatment. This Laboratory Grown Diamond was created by High Pressure High Temperature (HPHT) growth process. Type II



THIS DOCUMENT WAS PRODUCED WITH THE FOLLOWING SECURITY MEASURES: SPECIAL DOCUMENT PAPER, INK SCREENS, WATERMARK, BACKGROUND DESIGN, HOLOGRAM AND OTHER SECURITY FEATURES NOT LISTED AND DO EXCEED DOCUMENT SECURITY INDUSTRY GUIDELINES.

For terms & conditions and to verify this report, please visit [www.igi.org](http://www.igi.org)