



Report verification at igi.org

ELECTRONIC COPY

LABORATORY GROWN DIAMOND REPORT

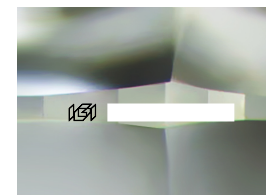
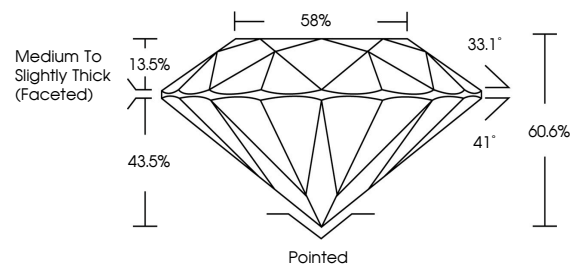
November 13, 2025
 IGI Report Number
 Description **LABORATORY GROWN DIAMOND**
 Shape and Cutting Style **ROUND BRILLIANT**
 Measurements **9.33 - 9.42 X 5.68 MM**
GRADING RESULTS
 Carat Weight **3.05 CARATS**
 Color Grade **F**
 Clarity Grade **VVS 1**
 Cut Grade **IDEAL**

ADDITIONAL GRADING INFORMATION

Polish **EXCELLENT**
 Symmetry **EXCELLENT**
 Fluorescence **NONE**
 Inscription(s)

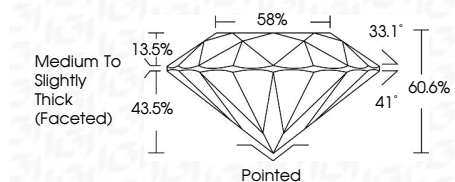
Comments: This Laboratory Grown Diamond was created by Chemical Vapor Deposition (CVD) growth process. Type IIa

PROPORTIONS



Sample Image Used

November 13, 2025
 IGI Report Number
 Description **LABORATORY GROWN DIAMOND**
 Shape and Cutting Style **ROUND BRILLIANT**
 Measurements **9.33 - 9.42 X 5.68 MM**
GRADING RESULTS
 Carat Weight **3.05 CARATS**
 Color Grade **F**
 Clarity Grade **VVS 1**
 Cut Grade **IDEAL**



COLOR

D E F G H I J Faint Very Light Light

CLARITY

FL	IF	VVS ¹⁻²	VS ¹⁻²	SI ¹⁻²	I ¹⁻³
Flawless	Internally Flawless	Very Very Slightly Included	Very Slightly Included	Slightly Included	Included

ADDITIONAL GRADING INFORMATION

Polish **EXCELLENT**
 Symmetry **EXCELLENT**
 Fluorescence **NONE**
 Inscription(s)
 Comments: This Laboratory Grown Diamond was created by Chemical Vapor Deposition (CVD) growth process. Type IIa



IGI



November 13, 2025	3.05 CARATS	F	VVS 1	IDEAL	60.6%	58%	Medium To Slightly Thick (Faceted)	Pointed	EXCELLENT	EXCELLENT	NONE	
IGI Report No	Carat Weight	Color Grade	Clarity Grade	Cut Grade	Depth	Table	Girdle	Culet	Polish	Symmetry	Fluorescence	Inscriptions(s)
9.33 - 9.42 X 5.68 MM												

Comments: This Laboratory Grown Diamond was created by Chemical Vapor Deposition (CVD) growth process. Type IIa